

## Daily Direct Steer and Heifer Slaughter Cattle Summary

For Trade on:

Friday, July 17, 2020

<a href="#">LM_CT100</a>	<b>5-AREA</b>	<a href="#">LM_CT109</a>
<b>Neg. Cash Volume:</b>	2,944	<b>Dressed Formula Vol:</b> 48,665
<b>Live Steer Avg:</b>	\$98.80	<b>Steer/Heifer Avg:</b> \$155.13
<b>Live Heifer Avg:</b>	\$97.07	<b>Dressed Neg. Grid Vol:</b> 2,527
<b>Dressed Steer Avg:</b>	\$157.12	<b>Steer/Heifer Avg:</b> \$156.51
<b>Dressed Heifer Avg:</b>	\$157.00	<b>TOTAL VOLUME:</b> 54,136
<a href="#">LM_CT106</a>	<b>TOTAL WK TO DATE VOLUME:</b>	<b>310,134</b>
<b>Committed:</b>	86,427	<b>Delivered:</b> 119,722

<a href="#">LM_CT118</a>	<b>TX-OK-NM</b>	<a href="#">LM_CT109</a>
<b>Neg. Cash Volume:</b>	0	<b>Dressed Formula Vol:</b> 14,878
<b>Live Steer Avg:</b>	N/A	<b>Steer/Heifer Avg:</b> \$150.82
<b>Live Heifer Avg:</b>	N/A	<b>Dressed Neg. Grid Vol:</b> 371
<b>Dressed Steer Avg:</b>	N/A	<b>Steer/Heifer Avg:</b> \$149.61
<b>Dressed Heifer Avg:</b>	N/A	<b>TOTAL VOLUME:</b> 15,249
<a href="#">LM_CT106</a>	<b>TOTAL WK TO DATE VOLUME:</b>	<b>81,101</b>
<b>Committed:</b>	26,577	<b>Delivered:</b> 29,244

<a href="#">LM_CT121</a>	<b>KANSAS</b>	<a href="#">LM_CT109</a>
<b>Neg. Cash Volume:</b>	322	<b>Dressed Formula Vol:</b> 19,275
<b>Live Steer Avg:</b>	N/A	<b>Steer/Heifer Avg:</b> \$152.87
<b>Live Heifer Avg:</b>	\$95.00	<b>Dressed Neg. Grid Vol:</b> 368
<b>Dressed Steer Avg:</b>	N/A	<b>Steer/Heifer Avg:</b> \$157.15
<b>Dressed Heifer Avg:</b>	N/A	<b>TOTAL VOLUME:</b> 19,965
<a href="#">LM_CT106</a>	<b>TOTAL WK TO DATE VOLUME:</b>	<b>107,972</b>
<b>Committed:</b>	20,730	<b>Delivered:</b> 41,933

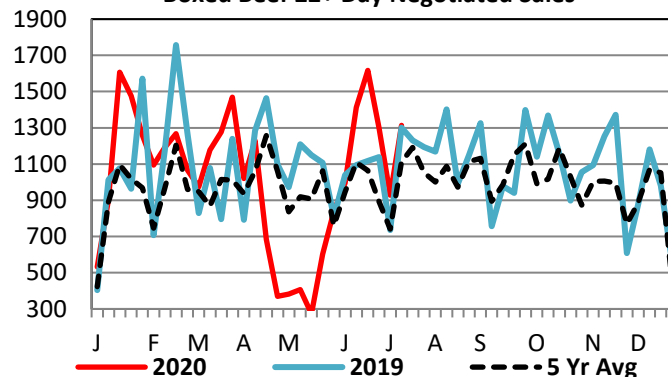
<a href="#">LM_CT124</a>	<b>NEBRASKA</b>	<a href="#">LM_CT109</a>
<b>Neg. Cash Volume:</b>	1,302	<b>Dressed Formula Vol:</b> 9,587
<b>Live Steer Avg:</b>	\$98.00	<b>Steer/Heifer Avg:</b> \$159.38
<b>Live Heifer Avg:</b>	\$98.00	<b>Dressed Neg. Grid Vol:</b> 1,081
<b>Dressed Steer Avg:</b>	\$157.00	<b>Steer/Heifer Avg:</b> \$156.88
<b>Dressed Heifer Avg:</b>	\$157.00	<b>TOTAL VOLUME:</b> 11,970
<a href="#">LM_CT106</a>	<b>TOTAL WK TO DATE VOLUME:</b>	<b>69,712</b>
<b>Committed:</b>	16,540	<b>Delivered:</b> 24,256

<a href="#">LM_CT134</a>	<b>COLORADO</b>	<a href="#">LM_CT109</a>
<b>Neg. Cash Volume:</b>	0	<b>Dressed Formula Vol:</b> 3,531
<b>Live Steer Avg:</b>	N/A	<b>Steer/Heifer Avg:</b> \$172.33
<b>Live Heifer Avg:</b>	N/A	<b>Dressed Neg. Grid Vol:</b> 0
<b>Dressed Steer Avg:</b>	N/A	<b>Steer/Heifer Avg:</b> N/A
<b>Dressed Heifer Avg:</b>	N/A	<b>TOTAL VOLUME:</b> 3,531
<a href="#">LM_CT106</a>	<b>TOTAL WK TO DATE VOLUME:</b>	<b>21,472</b>
<b>Committed:</b>	16,335	<b>Delivered:</b> 9,679

<a href="#">LM_CT137</a>	<b>IA-MN</b>	<a href="#">LM_CT109</a>
<b>Neg. Cash Volume:</b>	1,320	<b>Dressed Formula Vol:</b> 1,678
<b>Live Steer Avg:</b>	\$99.60	<b>Steer/Heifer Avg:</b> \$160.03
<b>Live Heifer Avg:</b>	\$100.00	<b>Dressed Neg. Grid Vol:</b> 724
<b>Dressed Steer Avg:</b>	\$157.20	<b>Steer/Heifer Avg:</b> \$159.14
<b>Dressed Heifer Avg:</b>	\$157.00	<b>TOTAL VOLUME:</b> 3,722
<a href="#">LM_CT106</a>	<b>TOTAL WK TO DATE VOLUME:</b>	<b>31,010</b>
<b>Committed:</b>	6,245	<b>Delivered:</b> 14,610

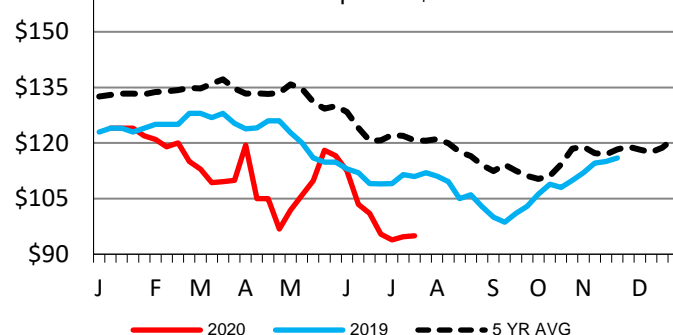
Negotiated cash trade in the Texas Panhandle and Colorado was at a standstill. In Kansas, Nebraska and Western Cornbelt negotiated cash trading inactive on light demand. Not enough trades in any region for a market trend. The last reported market in the Southern Plains and Nebraska was Thursday. In the Southern Plains live trades moved at 95.00. In Nebraska live trades moved at 97.50 and dressed 157.00. In Colorado the last reported market was Wednesday with live trades at 96.00. In the Western Cornbelt Tuesday was last reported live trade market at 97.00-100.00. Wednesday was the last dressed trade market at 157.00-160.00.

Boxed Beef 22+ Day Negotiated Sales



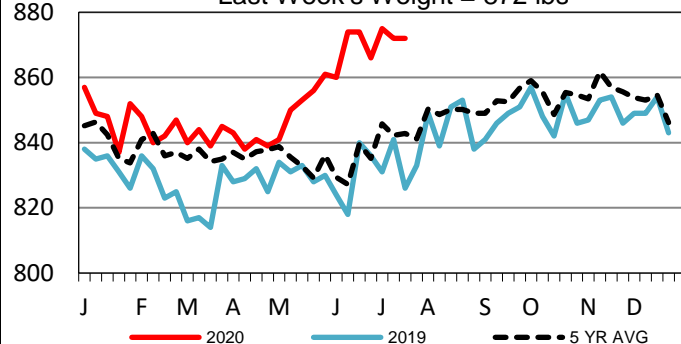
TX-OK-NM Wkly Live Steer Wtd Avg

Last week's price= \$95.00



TX-OK-NM Formula Carcass Weights

Last Week's Weight = 872 lbs



## USDA Livestock, Poultry and Grain Market News

St. Joseph, Missouri

Phone: 816-676-7000

[stjoe.lpgmn@ams.usda.gov](mailto:stjoe.lpgmn@ams.usda.gov)