

Daily Direct Steer and Heifer Slaughter Cattle Summary

For Trade on:

Monday, July 13, 2020

LM CT100	5-AREA	LM CT109
Neg. Cash Volume:	2,755	Dressed Formula Vol: 61,393
Live Steer Avg:	\$95.00	Steer/Heifer Avg: \$151.63
Live Heifer Avg:	\$95.00	Dressed Neg. Grid Vol: 1,032
Dressed Steer Avg:	\$155.00	Steer/Heifer Avg: \$153.76
Dressed Heifer Avg:	\$155.00	TOTAL VOLUME: 65,180
LM CT106	TOTAL WK TO DATE VOLUME:	65,180
Committed:	41,626	Delivered: 68,538

LM CT118	TX-OK-NM	LM CT109
Neg. Cash Volume:	220	Dressed Formula Vol: 20,639
Live Steer Avg:	\$95.00	Steer/Heifer Avg: \$149.64
Live Heifer Avg:	\$95.00	Dressed Neg. Grid Vol: 351
Dressed Steer Avg:	N/A	Steer/Heifer Avg: \$146.80
Dressed Heifer Avg:	N/A	TOTAL VOLUME: 21,210
LM CT106	TOTAL WK TO DATE VOLUME:	21,210
Committed:	4,698	Delivered: 15,797

LM CT121	KANSAS	LM CT109
Neg. Cash Volume:	1,275	Dressed Formula Vol: 27,011
Live Steer Avg:	\$95.00	Steer/Heifer Avg: \$150.86
Live Heifer Avg:	\$95.00	Dressed Neg. Grid Vol: 0
Dressed Steer Avg:	N/A	Steer/Heifer Avg: N/A
Dressed Heifer Avg:	N/A	TOTAL VOLUME: 28,286
LM CT106	TOTAL WK TO DATE VOLUME:	28,286
Committed:	12,527	Delivered: 21,648

LM CT124	NEBRASKA	LM CT109
Neg. Cash Volume:	700	Dressed Formula Vol: 9,356
Live Steer Avg:	N/A	Steer/Heifer Avg: \$157.30
Live Heifer Avg:	N/A	Dressed Neg. Grid Vol: 355
Dressed Steer Avg:	N/A	Steer/Heifer Avg: \$158.16
Dressed Heifer Avg:	N/A	TOTAL VOLUME: 10,411
LM CT106	TOTAL WK TO DATE VOLUME:	10,411
Committed:	14,289	Delivered: 15,963

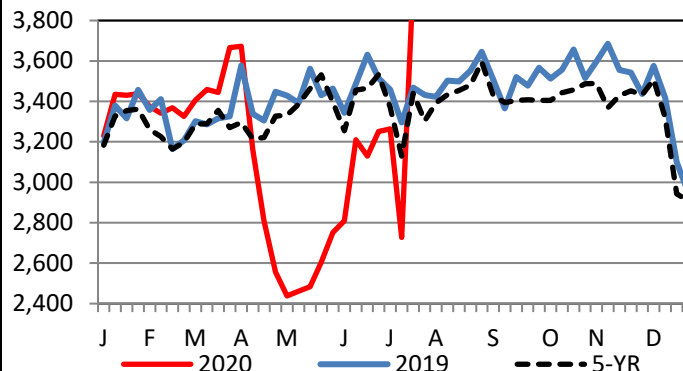
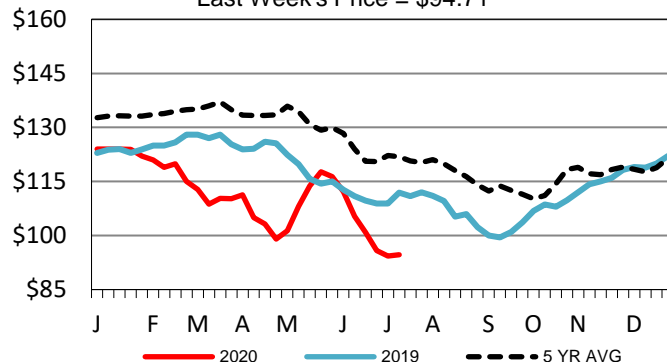
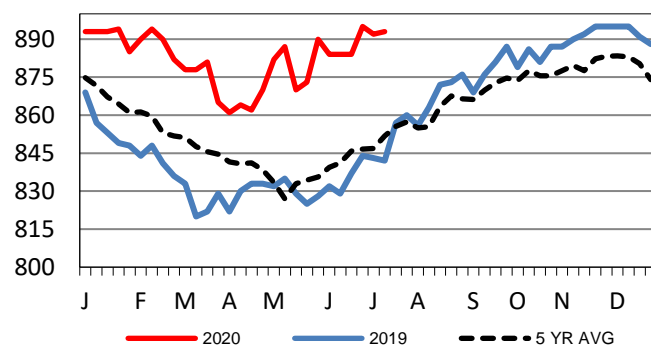
LM CT134	COLORADO	LM CT109
Neg. Cash Volume:	168	Dressed Formula Vol: 3,019
Live Steer Avg:	\$95.00	Steer/Heifer Avg: \$152.75
Live Heifer Avg:	\$95.00	Dressed Neg. Grid Vol: 78
Dressed Steer Avg:	N/A	Steer/Heifer Avg: \$162.01
Dressed Heifer Avg:	N/A	TOTAL VOLUME: 3,265
LM CT106	TOTAL WK TO DATE VOLUME:	3,265
Committed:	4,933	Delivered: 8,328

LM CT137	IA-MN	LM CT109
Neg. Cash Volume:	392	Dressed Formula Vol: 1,484
Live Steer Avg:	N/A	Steer/Heifer Avg: \$155.16
Live Heifer Avg:	N/A	Dressed Neg. Grid Vol: 248
Dressed Steer Avg:	\$155.00	Steer/Heifer Avg: \$154.73
Dressed Heifer Avg:	\$155.00	TOTAL VOLUME: 2,124
LM CT106	TOTAL WK TO DATE VOLUME:	2,124
Committed:	5,179	Delivered: 6,802

On Monday negotiated cash trading in all major feeding regions was limited on light demand. In the Southern Plains a few live trades moved at 95.00. However, not enough for a full market trend in any region. Last week in the Southern Plains live trades moved at 95.00.

For the prior week in the Northern Plains live trades moved at 96.00 and, in Nebraska, dressed trades moved mostly at 157.00. In the Western Cornbelt, last week, live trades moved from 99.00-100.00 and dressed trades moved mostly from 157.00-160.00.

Boxed Beef Formula Load Count

Kansas Weekly Live Steer Weighted Average
Last Week's Price = \$94.71Kansas Formula Carcass Weights
Last Week's Weight = 893 lbs

USDA Livestock, Poultry and Grain Market News

St. Joseph, Missouri

Phone: 816-676-7000

stjoe.lpgmn@ams.usda.gov