

## Daily Direct Steer and Heifer Slaughter Cattle Summary

For Trade on:

Thursday, June 25, 2020

<a href="#">LM CT100</a>	<b>5-AREA</b>	<a href="#">LM CT109</a>
<b>Neg. Cash Volume:</b>	18,201	<b>Dressed Formula Vol:</b> 47,727
<b>Live Steer Avg:</b>	\$95.43	<b>Steer/Heifer Avg:</b> \$164.90
<b>Live Heifer Avg:</b>	\$95.93	<b>Dressed Neg. Grid Vol:</b> 1,309
<b>Dressed Steer Avg:</b>	\$153.88	<b>Steer/Heifer Avg:</b> \$162.25
<b>Dressed Heifer Avg:</b>	\$153.31	<b>TOTAL VOLUME:</b> 67,237
<a href="#">LM CT106</a>	<b>TOTAL WK TO DATE VOLUME:</b>	<b>243,877</b>
<b>Committed:</b>	105,737	<b>Delivered:</b> 68,009

<a href="#">LM CT118</a>	<b>TX-OK-NM</b>	<a href="#">LM CT109</a>
<b>Neg. Cash Volume:</b>	3,279	<b>Dressed Formula Vol:</b> 10,722
<b>Live Steer Avg:</b>	\$95.17	<b>Steer/Heifer Avg:</b> \$161.14
<b>Live Heifer Avg:</b>	\$93.53	<b>Dressed Neg. Grid Vol:</b> 0
<b>Dressed Steer Avg:</b>	N/A	<b>Steer/Heifer Avg:</b> N/A
<b>Dressed Heifer Avg:</b>	N/A	<b>TOTAL VOLUME:</b> 14,001
<a href="#">LM CT106</a>	<b>TOTAL WK TO DATE VOLUME:</b>	<b>53,639</b>
<b>Committed:</b>	50,597	<b>Delivered:</b> 19,286

<a href="#">LM CT121</a>	<b>KANSAS</b>	<a href="#">LM CT109</a>
<b>Neg. Cash Volume:</b>	7,310	<b>Dressed Formula Vol:</b> 17,695
<b>Live Steer Avg:</b>	\$95.65	<b>Steer/Heifer Avg:</b> \$162.66
<b>Live Heifer Avg:</b>	\$96.75	<b>Dressed Neg. Grid Vol:</b> 512
<b>Dressed Steer Avg:</b>	N/A	<b>Steer/Heifer Avg:</b> \$157.30
<b>Dressed Heifer Avg:</b>	N/A	<b>TOTAL VOLUME:</b> 25,517
<a href="#">LM CT106</a>	<b>TOTAL WK TO DATE VOLUME:</b>	<b>74,391</b>
<b>Committed:</b>	25,013	<b>Delivered:</b> 14,863

<a href="#">LM CT124</a>	<b>NEBRASKA</b>	<a href="#">LM CT109</a>
<b>Neg. Cash Volume:</b>	5,978	<b>Dressed Formula Vol:</b> 15,068
<b>Live Steer Avg:</b>	\$95.10	<b>Steer/Heifer Avg:</b> \$169.24
<b>Live Heifer Avg:</b>	\$96.05	<b>Dressed Neg. Grid Vol:</b> 263
<b>Dressed Steer Avg:</b>	\$154.10	<b>Steer/Heifer Avg:</b> \$168.97
<b>Dressed Heifer Avg:</b>	\$153.54	<b>TOTAL VOLUME:</b> 21,309
<a href="#">LM CT106</a>	<b>TOTAL WK TO DATE VOLUME:</b>	<b>73,899</b>
<b>Committed:</b>	20,152	<b>Delivered:</b> 19,993

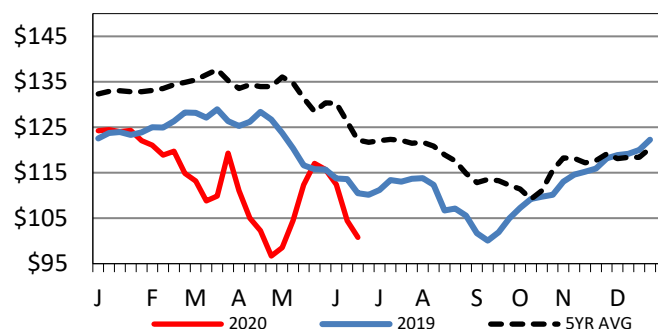
<a href="#">LM CT134</a>	<b>COLORADO</b>	<a href="#">LM CT109</a>
<b>Neg. Cash Volume:</b>	0	<b>Dressed Formula Vol:</b> 2,767
<b>Live Steer Avg:</b>	N/A	<b>Steer/Heifer Avg:</b> \$170.00
<b>Live Heifer Avg:</b>	N/A	<b>Dressed Neg. Grid Vol:</b> 0
<b>Dressed Steer Avg:</b>	N/A	<b>Steer/Heifer Avg:</b> N/A
<b>Dressed Heifer Avg:</b>	N/A	<b>TOTAL VOLUME:</b> 2,767
<a href="#">LM CT106</a>	<b>TOTAL WK TO DATE VOLUME:</b>	<b>13,666</b>
<b>Committed:</b>	4,860	<b>Delivered:</b> 5,156

<a href="#">LM CT137</a>	<b>IA-MN</b>	<a href="#">LM CT109</a>
<b>Neg. Cash Volume:</b>	1,634	<b>Dressed Formula Vol:</b> 1,955
<b>Live Steer Avg:</b>	\$99.00	<b>Steer/Heifer Avg:</b> \$164.84
<b>Live Heifer Avg:</b>	\$98.00	<b>Dressed Neg. Grid Vol:</b> 574
<b>Dressed Steer Avg:</b>	\$153.25	<b>Steer/Heifer Avg:</b> \$164.29
<b>Dressed Heifer Avg:</b>	\$153.00	<b>TOTAL VOLUME:</b> 4,163
<a href="#">LM CT106</a>	<b>TOTAL WK TO DATE VOLUME:</b>	<b>29,115</b>
<b>Committed:</b>	5,115	<b>Delivered:</b> 8,711

In the Southern Plains and Nebraska negotiated cash trade slow on light to moderate demand. In the Texas Panhandle, compared to last week, live trades 5.00-7.00 lower at 93.00-95.00, few up to 97.00. In Kansas, compared to Wed, the bulk of live trades steady to 2.00 higher at 97.00. In Nebraska, compared to Wed, live trades steady to 3.00 lower at 95.00. A few dressed trades at 155.00. Not enough for a market trend. The last reported dressed market was Wed. at 155.00-156.00. Thursday in the Western Cornbelt negotiated cash trade limited on light demand. Not enough trades for a market trend. The last reported live trade market was Tue. at 98.00. The last reported dressed market was Wed. at 153.00-156.00.

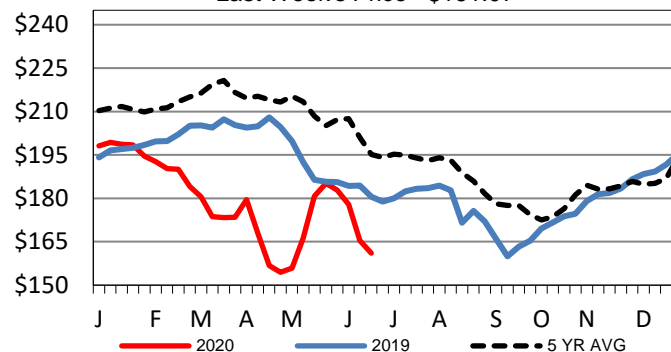
## 5-Area Live Steer Weighted Average

Last Week's Price = \$100.78



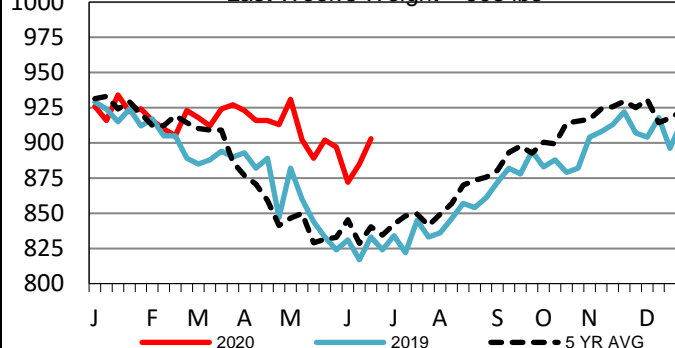
## Iowa-Minnesota Wkly Dressed Steer Wtd Avg

Last Week's Price = \$161.07



## Iowa-Minnesota Formula Carcass Weights

Last Week's Weight = 903 lbs



## USDA Livestock, Poultry and Grain Market News

St. Joseph, Missouri

Phone: 816-676-7000

[stjoe.lpgmn@ams.usda.gov](mailto:stjoe.lpgmn@ams.usda.gov)