

Daily Direct Steer and Heifer Slaughter Cattle Summary

For Trade on:

Monday, June 22, 2020

LM CT100	5-AREA	LM CT109
Neg. Cash Volume:	3,046	Dressed Formula Vol: 59,234
Live Steer Avg:	N/A	Steer/Heifer Avg: \$169.69
Live Heifer Avg:	N/A	Dressed Neg. Grid Vol: 127
Dressed Steer Avg:	\$153.35	Steer/Heifer Avg: \$176.81
Dressed Heifer Avg:	\$153.01	TOTAL VOLUME: 62,407
LM CT106	TOTAL WK TO DATE VOLUME:	62,407
Committed:	32,887	Delivered: 71,865

LM CT118	TX-OK-NM	LM CT109
Neg. Cash Volume:	435	Dressed Formula Vol: 17,317
Live Steer Avg:	N/A	Steer/Heifer Avg: \$169.54
Live Heifer Avg:	N/A	Dressed Neg. Grid Vol: 0
Dressed Steer Avg:	N/A	Steer/Heifer Avg: N/A
Dressed Heifer Avg:	N/A	TOTAL VOLUME: 17,752
LM CT106	TOTAL WK TO DATE VOLUME:	17,752
Committed:	2,141	Delivered: 17,058

LM CT121	KANSAS	LM CT109
Neg. Cash Volume:	0	Dressed Formula Vol: 25,705
Live Steer Avg:	N/A	Steer/Heifer Avg: \$169.58
Live Heifer Avg:	N/A	Dressed Neg. Grid Vol: 0
Dressed Steer Avg:	N/A	Steer/Heifer Avg: N/A
Dressed Heifer Avg:	N/A	TOTAL VOLUME: 25,705
LM CT106	TOTAL WK TO DATE VOLUME:	25,705
Committed:	8,780	Delivered: 18,985

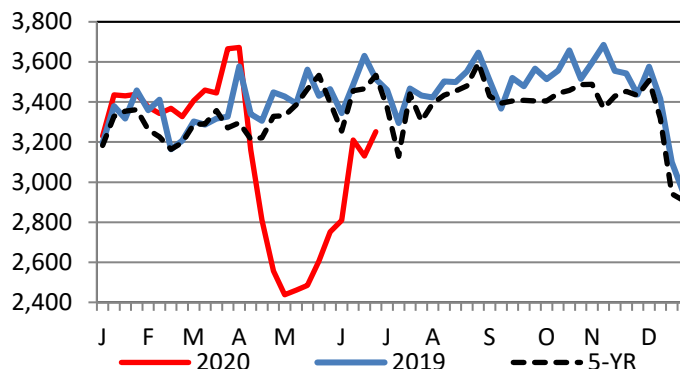
LM CT124	NEBRASKA	LM CT109
Neg. Cash Volume:	2,415	Dressed Formula Vol: 10,276
Live Steer Avg:	N/A	Steer/Heifer Avg: \$170.41
Live Heifer Avg:	N/A	Dressed Neg. Grid Vol: 30
Dressed Steer Avg:	\$153.35	Steer/Heifer Avg: \$182.93
Dressed Heifer Avg:	\$153.01	TOTAL VOLUME: 12,721
LM CT106	TOTAL WK TO DATE VOLUME:	12,721
Committed:	12,150	Delivered: 20,821

LM CT134	COLORADO	LM CT109
Neg. Cash Volume:	0	Dressed Formula Vol: 4,628
Live Steer Avg:	N/A	Steer/Heifer Avg: \$169.64
Live Heifer Avg:	N/A	Dressed Neg. Grid Vol: 0
Dressed Steer Avg:	N/A	Steer/Heifer Avg: N/A
Dressed Heifer Avg:	N/A	TOTAL VOLUME: 4,628
LM CT106	TOTAL WK TO DATE VOLUME:	4,628
Committed:	2,161	Delivered: 5,930

LM CT137	IA-MN	LM CT109
Neg. Cash Volume:	196	Dressed Formula Vol: 1,423
Live Steer Avg:	N/A	Steer/Heifer Avg: \$168.44
Live Heifer Avg:	N/A	Dressed Neg. Grid Vol: 135
Dressed Steer Avg:	N/A	Steer/Heifer Avg: \$174.06
Dressed Heifer Avg:	N/A	TOTAL VOLUME: 1,754
LM CT106	TOTAL WK TO DATE VOLUME:	1,754
Committed:	7,655	Delivered: 9,071

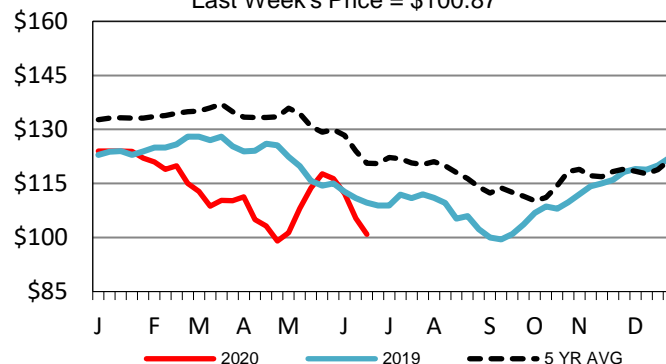
In the Texas Panhandle, Nebraska and Western Cornbelt negotiated cash trading very limited on very light demand. A very few live trades at 95.00 in the Texas Panhandle. In Nebraska a few dressed trades at 152.00-155.00. Not enough trades in these regions for a market trend. In Kansas negotiated cash trading was at a standstill. Last week in the Texas Panhandle live trades moved from 98.00 to 102.00. Last week in Kansas live trades moved mostly at 102.00. For the prior week in Nebraska live trades moved mostly from 98.00 to 102.00 and dressed trades moved mostly from 158.00 to 162.00. For the previous week in the Western Cornbelt live trades moved from 99.00 to 102.00 and dressed trades moved mostly from 160.00 to 162.00.

Boxed Beef Formula Load Count



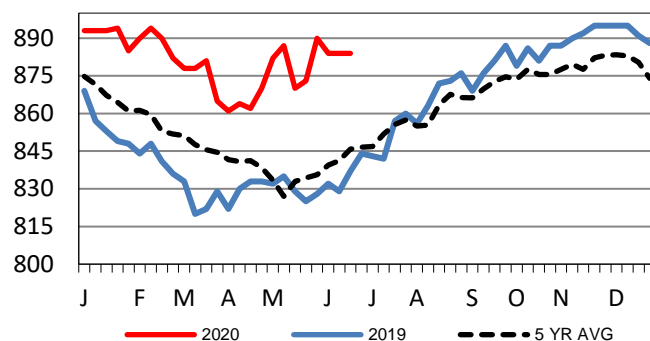
Kansas Weekly Live Steer Weighted Average

Last Week's Price = \$100.87



Kansas Formula Carcass Weights

Last Week's Weight = 884 lbs



USDA Livestock, Poultry and Grain Market News

St. Joseph, Missouri

Phone: 816-676-7000

stjoe.lpgmn@ams.usda.gov