

Daily Direct Steer and Heifer Slaughter Cattle Summary

For Trade on:

Wednesday, June 10, 2020

LM CT100	5-AREA	LM CT109
Neg. Cash Volume:	31,399	Dressed Formula Vol: 28,885
Live Steer Avg:	\$106.14	Steer/Heifer Avg: \$186.46
Live Heifer Avg:	\$107.13	Dressed Neg. Grid Vol: 729
Dressed Steer Avg:	\$170.74	Steer/Heifer Avg: \$179.84
Dressed Heifer Avg:	\$169.41	TOTAL VOLUME: 61,013
LM CT106	TOTAL WK TO DATE VOLUME:	164,688
Committed:	106,854	Delivered: 69,746

LM CT118	TX-OK-NM	LM CT109
Neg. Cash Volume:	4,192	Dressed Formula Vol: 10,447
Live Steer Avg:	\$104.89	Steer/Heifer Avg: \$183.99
Live Heifer Avg:	\$107.28	Dressed Neg. Grid Vol: 0
Dressed Steer Avg:	N/A	Steer/Heifer Avg: N/A
Dressed Heifer Avg:	N/A	TOTAL VOLUME: 14,639
LM CT106	TOTAL WK TO DATE VOLUME:	43,469
Committed:	41,623	Delivered: 16,808

LM CT121	KANSAS	LM CT109
Neg. Cash Volume:	4,370	Dressed Formula Vol: 7,280
Live Steer Avg:	\$107.85	Steer/Heifer Avg: \$184.64
Live Heifer Avg:	\$107.49	Dressed Neg. Grid Vol: 81
Dressed Steer Avg:	\$172.00	Steer/Heifer Avg: \$181.23
Dressed Heifer Avg:	\$172.00	TOTAL VOLUME: 11,731
LM CT106	TOTAL WK TO DATE VOLUME:	46,254
Committed:	18,106	Delivered: 17,468

LM CT124	NEBRASKA	LM CT109
Neg. Cash Volume:	14,287	Dressed Formula Vol: 8,147
Live Steer Avg:	\$106.87	Steer/Heifer Avg: \$191.47
Live Heifer Avg:	\$108.00	Dressed Neg. Grid Vol: 68
Dressed Steer Avg:	\$170.72	Steer/Heifer Avg: \$182.43
Dressed Heifer Avg:	\$168.71	TOTAL VOLUME: 22,502
LM CT106	TOTAL WK TO DATE VOLUME:	47,449
Committed:	26,357	Delivered: 21,132

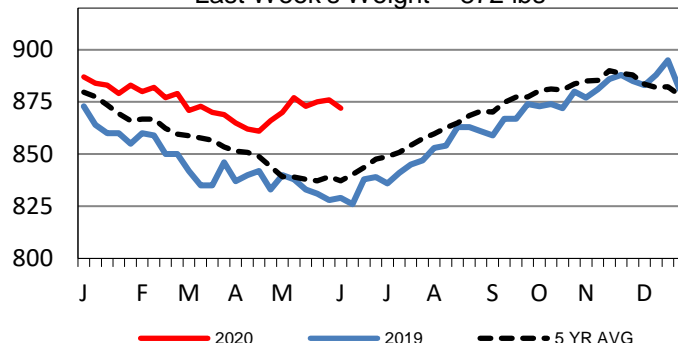
LM CT134	COLORADO	LM CT109
Neg. Cash Volume:	0	Dressed Formula Vol: 1,345
Live Steer Avg:	N/A	Steer/Heifer Avg: \$190.62
Live Heifer Avg:	N/A	Dressed Neg. Grid Vol: 135
Dressed Steer Avg:	N/A	Steer/Heifer Avg: \$175.25
Dressed Heifer Avg:	N/A	TOTAL VOLUME: 1,480
LM CT106	TOTAL WK TO DATE VOLUME:	8,450
Committed:	7,957	Delivered: 6,634

LM CT137	IA-MN	LM CT109
Neg. Cash Volume:	8,550	Dressed Formula Vol: 1,824
Live Steer Avg:	\$104.95	Steer/Heifer Avg: \$182.70
Live Heifer Avg:	\$101.00	Dressed Neg. Grid Vol: 485
Dressed Steer Avg:	\$170.64	Steer/Heifer Avg: \$180.62
Dressed Heifer Avg:	\$170.16	TOTAL VOLUME: 10,859
LM CT106	TOTAL WK TO DATE VOLUME:	19,414
Committed:	12,811	Delivered: 7,704

In all major feeding regions negotiated cash trade slow on light demand. In the Southern Plains, compared to last week, bulk of live trades unevenly steady at 108.00. In Nebraska a few live and dressed trades at 108.00 and 165.00-172.00. Not enough trades for a market trend. The last reported dressed market was Tue. at 165.00. Last week live trades 110.00-118.00. In the Western Cornbelt a few live and dressed trades t 105.00 and 165.00-172.00. Not enough trades for a market trend. For the previous week in the Western Cornbelt live trades 108.00-114.00 and bulk of dressed 175.00-185.00.

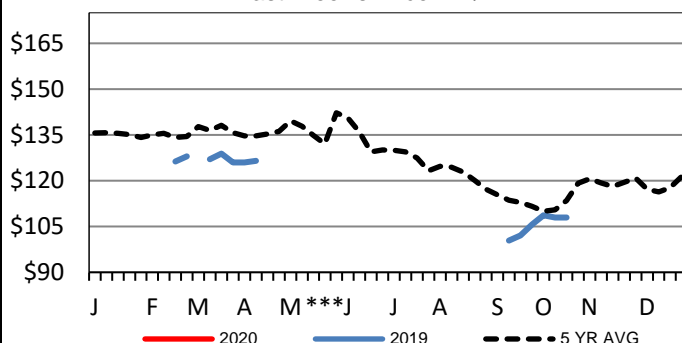
5-Area Formula Carcass Weight

Last Week's Weight = 872 lbs



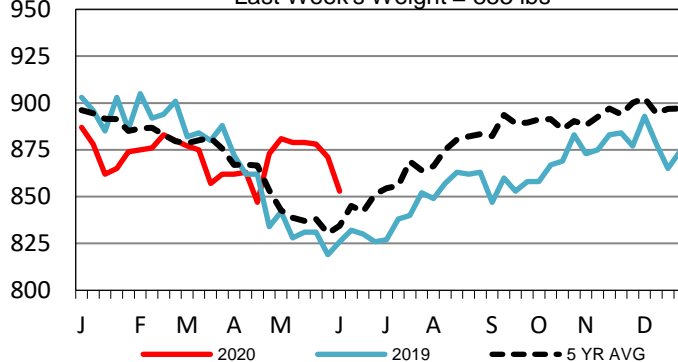
Colorado Live Wkly Steer Weighted Avg

Last Week's Price = N/A



Colorado Formula Carcass Weights

Last Week's Weight = 853 lbs



USDA Livestock, Poultry and Grain Market News

St. Joseph, Missouri

Phone: 816-676-7000

stjoe.lpgmn@ams.usda.gov