

## Daily Direct Steer and Heifer Slaughter Cattle Summary

For Trade on:

Wednesday, May 27, 2020

<a href="#">LM_CT100</a>	<b>5-AREA</b>	<a href="#">LM_CT109</a>
<b>Neg. Cash Volume:</b>	33,528	<b>Dressed Formula Vol:</b> 16,978
<b>Live Steer Avg:</b>	\$115.60	<b>Steer/Heifer Avg:</b> \$188.34
<b>Live Heifer Avg:</b>	\$116.28	<b>Dressed Neg. Grid Vol:</b> 1,568
<b>Dressed Steer Avg:</b>	\$182.08	<b>Steer/Heifer Avg:</b> \$184.00
<b>Dressed Heifer Avg:</b>	\$183.52	<b>TOTAL VOLUME:</b> 52,074
<a href="#">LM_CT106</a>	<b>TOTAL WK TO DATE VOLUME:</b>	<b>138,224</b>
<b>Committed:</b>	96,705	<b>Delivered:</b> 62,073

<a href="#">LM_CT118</a>	<b>TX-OK-NM</b>	<a href="#">LM_CT109</a>
<b>Neg. Cash Volume:</b>	500	<b>Dressed Formula Vol:</b> 6,906
<b>Live Steer Avg:</b>	\$120.00	<b>Steer/Heifer Avg:</b> \$187.90
<b>Live Heifer Avg:</b>	\$120.00	<b>Dressed Neg. Grid Vol:</b> 456
<b>Dressed Steer Avg:</b>	N/A	<b>Steer/Heifer Avg:</b> \$189.79
<b>Dressed Heifer Avg:</b>	N/A	<b>TOTAL VOLUME:</b> 7,862
<a href="#">LM_CT106</a>	<b>TOTAL WK TO DATE VOLUME:</b>	<b>34,033</b>
<b>Committed:</b>	28,502	<b>Delivered:</b> 14,160

<a href="#">LM_CT121</a>	<b>KANSAS</b>	<a href="#">LM_CT109</a>
<b>Neg. Cash Volume:</b>	3,565	<b>Dressed Formula Vol:</b> 1,911
<b>Live Steer Avg:</b>	\$117.83	<b>Steer/Heifer Avg:</b> \$181.28
<b>Live Heifer Avg:</b>	\$117.10	<b>Dressed Neg. Grid Vol:</b> 348
<b>Dressed Steer Avg:</b>	\$190.00	<b>Steer/Heifer Avg:</b> \$188.93
<b>Dressed Heifer Avg:</b>	N/A	<b>TOTAL VOLUME:</b> 5,824
<a href="#">LM_CT106</a>	<b>TOTAL WK TO DATE VOLUME:</b>	<b>23,923</b>
<b>Committed:</b>	22,900	<b>Delivered:</b> 17,010

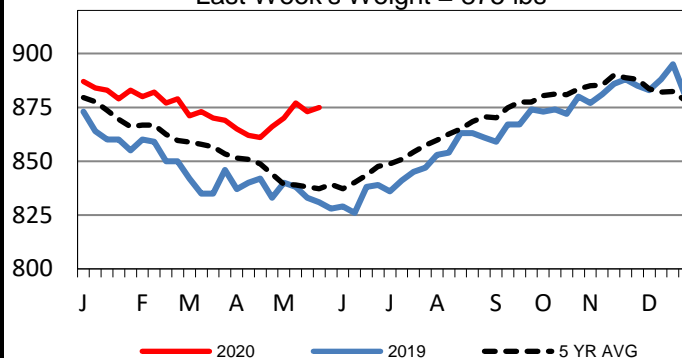
<a href="#">LM_CT124</a>	<b>NEBRASKA</b>	<a href="#">LM_CT109</a>
<b>Neg. Cash Volume:</b>	11,008	<b>Dressed Formula Vol:</b> 4,380
<b>Live Steer Avg:</b>	\$115.38	<b>Steer/Heifer Avg:</b> \$194.83
<b>Live Heifer Avg:</b>	\$120.00	<b>Dressed Neg. Grid Vol:</b> 0
<b>Dressed Steer Avg:</b>	\$181.56	<b>Steer/Heifer Avg:</b> N/A
<b>Dressed Heifer Avg:</b>	\$183.33	<b>TOTAL VOLUME:</b> 15,388
<a href="#">LM_CT106</a>	<b>TOTAL WK TO DATE VOLUME:</b>	<b>40,446</b>
<b>Committed:</b>	23,279	<b>Delivered:</b> 17,370

<a href="#">LM_CT134</a>	<b>COLORADO</b>	<a href="#">LM_CT109</a>
<b>Neg. Cash Volume:</b>	0	<b>Dressed Formula Vol:</b> 2,514
<b>Live Steer Avg:</b>	N/A	<b>Steer/Heifer Avg:</b> \$186.04
<b>Live Heifer Avg:</b>	N/A	<b>Dressed Neg. Grid Vol:</b> 0
<b>Dressed Steer Avg:</b>	N/A	<b>Steer/Heifer Avg:</b> N/A
<b>Dressed Heifer Avg:</b>	N/A	<b>TOTAL VOLUME:</b> 2,514
<a href="#">LM_CT106</a>	<b>TOTAL WK TO DATE VOLUME:</b>	<b>12,118</b>
<b>Committed:</b>	3,874	<b>Delivered:</b> 5,025

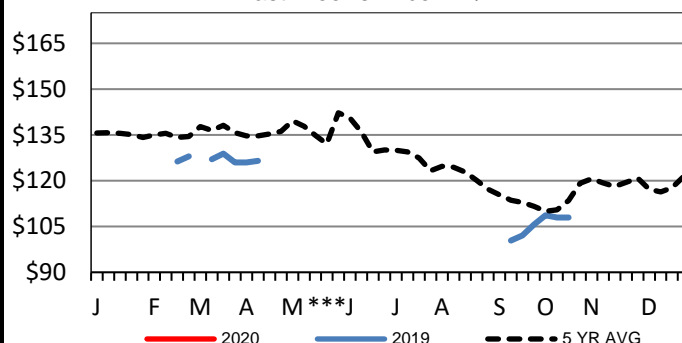
<a href="#">LM_CT137</a>	<b>IA-MN</b>	<a href="#">LM_CT109</a>
<b>Neg. Cash Volume:</b>	18,455	<b>Dressed Formula Vol:</b> 1,267
<b>Live Steer Avg:</b>	\$114.56	<b>Steer/Heifer Avg:</b> \$183.50
<b>Live Heifer Avg:</b>	\$114.11	<b>Dressed Neg. Grid Vol:</b> 883
<b>Dressed Steer Avg:</b>	\$182.23	<b>Steer/Heifer Avg:</b> \$176.32
<b>Dressed Heifer Avg:</b>	\$183.58	<b>TOTAL VOLUME:</b> 20,605
<a href="#">LM_CT106</a>	<b>TOTAL WK TO DATE VOLUME:</b>	<b>28,008</b>
<b>Committed:</b>	18,150	<b>Delivered:</b> 8,508

In the Southern Plains negotiated cash trade limited on light demand. In Kansas, compared to last week, live steady at 115.00-120.00. In the Texas Panhandle not enough trades for a market trend. Last week live trades 120.00. Wednesday in Nebraska negotiated cash trade moderate with moderate demand. Compared to last reported market on Tue, dressed steady to 2.00 lower at 178.00-190.00. Not enough live trades for a market trend. The last live trade market was Tue. at 112.00-115.00. Wednesday in the Western Cornbelt negotiated cash trade moderate with moderate to good demand. Compared to last week the bulk of live trades steady to 1.00 higher at 115.00 and the bulk of dressed 2.00-5.00 lower at 178.00-185.00, few at 190.00.

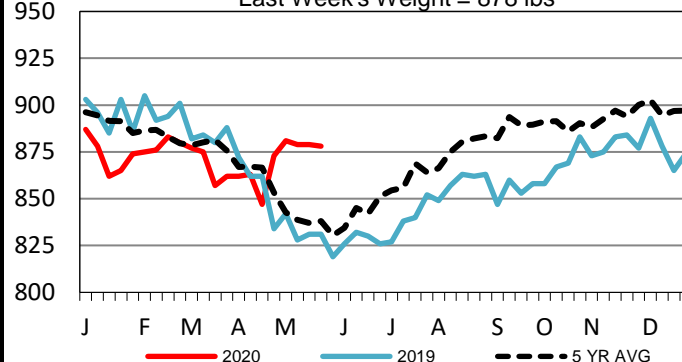
**5-Area Formula Carcass Weight**  
Last Week's Weight = 875 lbs



**Colorado Live Wkly Steer Weighted Avg**  
Last Week's Price = N/A



**Colorado Formula Carcass Weights**  
Last Week's Weight = 878 lbs



## USDA Livestock, Poultry and Grain Market News

St. Joseph, Missouri

Phone: 816-676-7000

[stjoe.lpgmn@ams.usda.gov](mailto:stjoe.lpgmn@ams.usda.gov)