

Daily Direct Steer and Heifer Slaughter Cattle Summary

For Trade on:

Monday, May 18, 2020

<a href="#">LM CT100</a>	<b>5-AREA</b>	<a href="#">LM CT109</a>
<b>Neg. Cash Volume:</b>	10,270	<b>Dressed Formula Vol:</b> 26,635
<b>Live Steer Avg:</b>	\$116.46	<b>Steer/Heifer Avg:</b> \$168.25
<b>Live Heifer Avg:</b>	\$119.53	<b>Dressed Neg. Grid Vol:</b> 12,758
<b>Dressed Steer Avg:</b>	\$182.88	<b>Steer/Heifer Avg:</b> \$184.02
<b>Dressed Heifer Avg:</b>	\$187.34	<b>TOTAL VOLUME:</b> 49,663
<a href="#">LM CT106</a>	<b>TOTAL WK TO DATE VOLUME:</b>	<b>49,663</b>
<b>Committed:</b>	54,793	<b>Delivered:</b> 57,814

<a href="#">LM CT118</a>	<b>TX-OK-NM</b>	<a href="#">LM CT109</a>
<b>Neg. Cash Volume:</b>	0	<b>Dressed Formula Vol:</b> 11,402
<b>Live Steer Avg:</b>	N/A	<b>Steer/Heifer Avg:</b> \$171.80
<b>Live Heifer Avg:</b>	N/A	<b>Dressed Neg. Grid Vol:</b> 1,792
<b>Dressed Steer Avg:</b>	N/A	<b>Steer/Heifer Avg:</b> \$183.17
<b>Dressed Heifer Avg:</b>	N/A	<b>TOTAL VOLUME:</b> 13,194
<a href="#">LM CT106</a>	<b>TOTAL WK TO DATE VOLUME:</b>	<b>13,194</b>
<b>Committed:</b>	4,025	<b>Delivered:</b> 14,088

<a href="#">LM CT121</a>	<b>KANSAS</b>	<a href="#">LM CT109</a>
<b>Neg. Cash Volume:</b>	76	<b>Dressed Formula Vol:</b> 5,888
<b>Live Steer Avg:</b>	N/A	<b>Steer/Heifer Avg:</b> \$176.51
<b>Live Heifer Avg:</b>	N/A	<b>Dressed Neg. Grid Vol:</b> 8,517
<b>Dressed Steer Avg:</b>	\$190.00	<b>Steer/Heifer Avg:</b> \$184.55
<b>Dressed Heifer Avg:</b>	N/A	<b>TOTAL VOLUME:</b> 14,481
<a href="#">LM CT106</a>	<b>TOTAL WK TO DATE VOLUME:</b>	<b>14,481</b>
<b>Committed:</b>	9,320	<b>Delivered:</b> 14,860

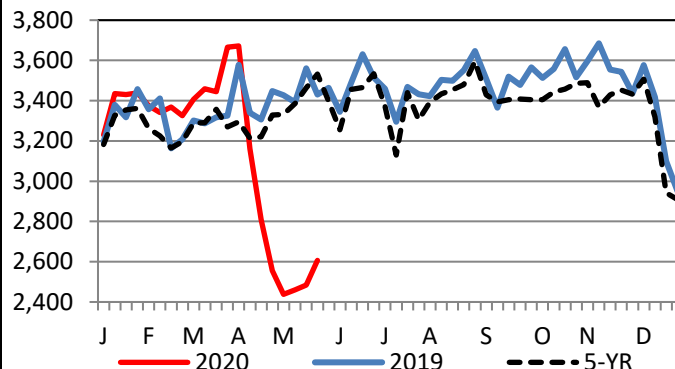
<a href="#">LM CT124</a>	<b>NEBRASKA</b>	<a href="#">LM CT109</a>
<b>Neg. Cash Volume:</b>	4,762	<b>Dressed Formula Vol:</b> 3,912
<b>Live Steer Avg:</b>	\$119.45	<b>Steer/Heifer Avg:</b> \$161.53
<b>Live Heifer Avg:</b>	\$119.53	<b>Dressed Neg. Grid Vol:</b> 2,020
<b>Dressed Steer Avg:</b>	\$184.77	<b>Steer/Heifer Avg:</b> \$185.20
<b>Dressed Heifer Avg:</b>	\$188.80	<b>TOTAL VOLUME:</b> 10,694
<a href="#">LM CT106</a>	<b>TOTAL WK TO DATE VOLUME:</b>	<b>10,694</b>
<b>Committed:</b>	20,979	<b>Delivered:</b> 13,359

<a href="#">LM CT134</a>	<b>COLORADO</b>	<a href="#">LM CT109</a>
<b>Neg. Cash Volume:</b>	0	<b>Dressed Formula Vol:</b> 4,871
<b>Live Steer Avg:</b>	N/A	<b>Steer/Heifer Avg:</b> \$155.29
<b>Live Heifer Avg:</b>	N/A	<b>Dressed Neg. Grid Vol:</b> 196
<b>Dressed Steer Avg:</b>	N/A	<b>Steer/Heifer Avg:</b> \$187.51
<b>Dressed Heifer Avg:</b>	N/A	<b>TOTAL VOLUME:</b> 5,067
<a href="#">LM CT106</a>	<b>TOTAL WK TO DATE VOLUME:</b>	<b>5,067</b>
<b>Committed:</b>	6,588	<b>Delivered:</b> 7,797

<a href="#">LM CT137</a>	<b>IA-MN</b>	<a href="#">LM CT109</a>
<b>Neg. Cash Volume:</b>	5,432	<b>Dressed Formula Vol:</b> 673
<b>Live Steer Avg:</b>	\$115.00	<b>Steer/Heifer Avg:</b> \$170.28
<b>Live Heifer Avg:</b>	N/A	<b>Dressed Neg. Grid Vol:</b> 390
<b>Dressed Steer Avg:</b>	\$181.55	<b>Steer/Heifer Avg:</b> \$165.94
<b>Dressed Heifer Avg:</b>	\$184.08	<b>TOTAL VOLUME:</b> 6,495
<a href="#">LM CT106</a>	<b>TOTAL WK TO DATE VOLUME:</b>	<b>6,495</b>
<b>Committed:</b>	13,881	<b>Delivered:</b> 7,710

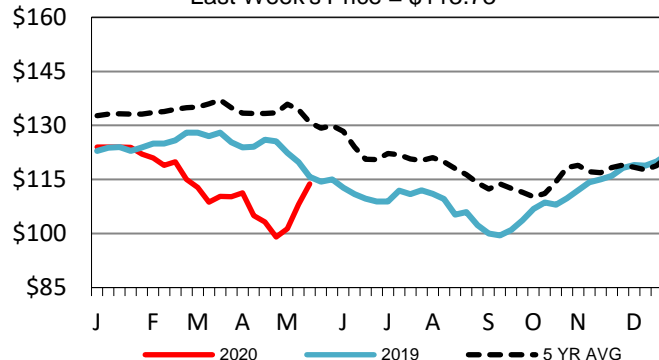
Trade light on light to moderate demand in Nebraska and the Western Cornbelt. In Nebraska a few early live purchases at 119.00-120.00 with a few dressed at 180.00-190.00, not enough for an adequate market test. In the Western Cornbelt a few early dressed purchases compared to the bulk of last week unevenly steady at 180.00-190.00, bulk at 180.00. A few early live purchases at 115.00, not enough for an adequate market test. Last week live purchases 105.00-115.00. Trade mostly inactive on light demand in the Southern Plains. Not enough purchases for an adequate market test. The latest established market was last week with live purchases at 110.00-120.00. Last week in Nebraska the bulk of purchases traded mostly at 110.00 and 180.00.

Boxed Beef Formula Load Count



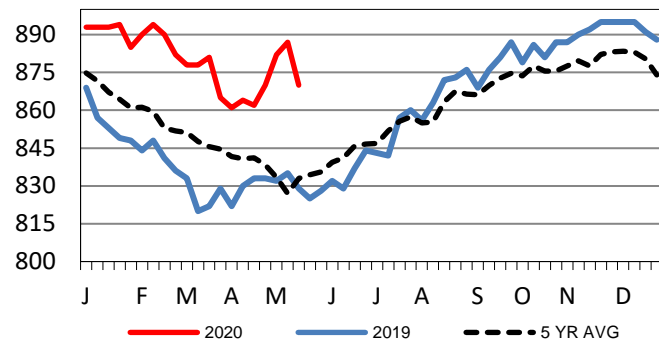
Kansas Weekly Live Steer Weighted Average

Last Week's Price = \$113.73



Kansas Formula Carcass Weights

Last Week's Weight = 870 lbs



USDA Livestock, Poultry and Grain Market News

St. Joseph, Missouri

Phone: 816-676-7000

[stjoe.lpgmn@ams.usda.gov](mailto:stjoe.lpgmn@ams.usda.gov)