

## Daily Direct Steer and Heifer Slaughter Cattle Summary

For Trade on:

Wednesday, March 18, 2020

<a href="#">LM CT100</a>	<b>5-AREA</b>	<a href="#">LM CT109</a>
<b>Neg. Cash Volume:</b>	43,847	<b>Dressed Formula Vol:</b> 24,513
<b>Live Steer Avg:</b>	\$111.44	<b>Steer/Heifer Avg:</b> \$178.22
<b>Live Heifer Avg:</b>	\$111.22	<b>Dressed Neg. Grid Vol:</b> 509
<b>Dressed Steer Avg:</b>	\$175.00	<b>Steer/Heifer Avg:</b> \$180.84
<b>Dressed Heifer Avg:</b>	\$174.93	<b>TOTAL VOLUME:</b> <b>68,869</b>
<a href="#">LM CT106</a>	<b>TOTAL WK TO DATE VOLUME:</b>	<b>236,027</b>
<b>Committed:</b>	103,198	<b>Delivered:</b> 72,650

<a href="#">LM CT118</a>	<b>TX-OK-NM</b>	<a href="#">LM CT109</a>
<b>Neg. Cash Volume:</b>	1,675	<b>Dressed Formula Vol:</b> 11,156
<b>Live Steer Avg:</b>	\$112.45	<b>Steer/Heifer Avg:</b> \$176.84
<b>Live Heifer Avg:</b>	\$111.94	<b>Dressed Neg. Grid Vol:</b> 0
<b>Dressed Steer Avg:</b>	N/A	<b>Steer/Heifer Avg:</b> N/A
<b>Dressed Heifer Avg:</b>	N/A	<b>TOTAL VOLUME:</b> <b>12,831</b>
<a href="#">LM CT106</a>	<b>TOTAL WK TO DATE VOLUME:</b>	<b>52,916</b>
<b>Committed:</b>	43,953	<b>Delivered:</b> 16,862

<a href="#">LM CT121</a>	<b>KANSAS</b>	<a href="#">LM CT109</a>
<b>Neg. Cash Volume:</b>	9,393	<b>Dressed Formula Vol:</b> 5,592
<b>Live Steer Avg:</b>	\$112.07	<b>Steer/Heifer Avg:</b> \$177.23
<b>Live Heifer Avg:</b>	\$112.03	<b>Dressed Neg. Grid Vol:</b> 0
<b>Dressed Steer Avg:</b>	N/A	<b>Steer/Heifer Avg:</b> N/A
<b>Dressed Heifer Avg:</b>	N/A	<b>TOTAL VOLUME:</b> <b>14,985</b>
<a href="#">LM CT106</a>	<b>TOTAL WK TO DATE VOLUME:</b>	<b>64,615</b>
<b>Committed:</b>	13,490	<b>Delivered:</b> 18,271

<a href="#">LM CT124</a>	<b>NEBRASKA</b>	<a href="#">LM CT109</a>
<b>Neg. Cash Volume:</b>	14,023	<b>Dressed Formula Vol:</b> 4,152
<b>Live Steer Avg:</b>	\$110.70	<b>Steer/Heifer Avg:</b> \$182.56
<b>Live Heifer Avg:</b>	\$111.02	<b>Dressed Neg. Grid Vol:</b> 284
<b>Dressed Steer Avg:</b>	\$175.00	<b>Steer/Heifer Avg:</b> \$177.89
<b>Dressed Heifer Avg:</b>	\$175.00	<b>TOTAL VOLUME:</b> <b>18,459</b>
<a href="#">LM CT106</a>	<b>TOTAL WK TO DATE VOLUME:</b>	<b>68,461</b>
<b>Committed:</b>	15,588	<b>Delivered:</b> 18,814

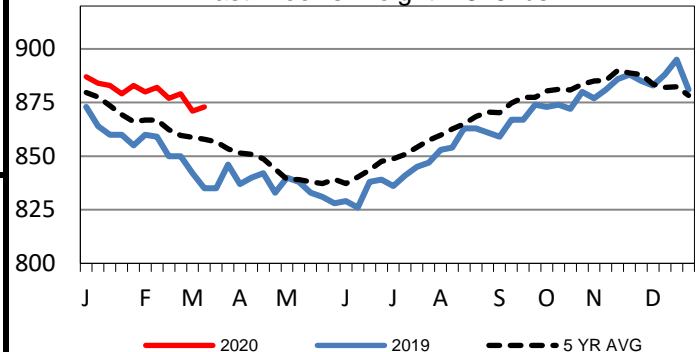
<a href="#">LM CT134</a>	<b>COLORADO</b>	<a href="#">LM CT109</a>
<b>Neg. Cash Volume:</b>	0	<b>Dressed Formula Vol:</b> 1,304
<b>Live Steer Avg:</b>	N/A	<b>Steer/Heifer Avg:</b> \$178.00
<b>Live Heifer Avg:</b>	N/A	<b>Dressed Neg. Grid Vol:</b> 143
<b>Dressed Steer Avg:</b>	N/A	<b>Steer/Heifer Avg:</b> \$187.48
<b>Dressed Heifer Avg:</b>	N/A	<b>TOTAL VOLUME:</b> <b>1,447</b>
<a href="#">LM CT106</a>	<b>TOTAL WK TO DATE VOLUME:</b>	<b>13,118</b>
<b>Committed:</b>	8,068	<b>Delivered:</b> 7,939

<a href="#">LM CT137</a>	<b>IA-MN</b>	<a href="#">LM CT109</a>
<b>Neg. Cash Volume:</b>	18,756	<b>Dressed Formula Vol:</b> 2,318
<b>Live Steer Avg:</b>	\$111.29	<b>Steer/Heifer Avg:</b> \$179.61
<b>Live Heifer Avg:</b>	\$110.01	<b>Dressed Neg. Grid Vol:</b> 82
<b>Dressed Steer Avg:</b>	\$175.00	<b>Steer/Heifer Avg:</b> \$179.48
<b>Dressed Heifer Avg:</b>	\$174.89	<b>TOTAL VOLUME:</b> <b>21,156</b>
<a href="#">LM CT106</a>	<b>TOTAL WK TO DATE VOLUME:</b>	<b>37,120</b>
<b>Committed:</b>	22,099	<b>Delivered:</b> 10,764

Negotiated cash trade and demand moderate in all major feeding regions. In the Texas Panhandle a few live trades moved at 110.00 to 113.00. However, not enough trades for a full market trend. The last reported market was Tue. with live cash trades at 110.00. In Kansas live cash trades unevenly steady at 110.00-113.00, bulk at 112.00, compared to the last reported market on Tue. In Nebraska live cash trades steady to 2.00 higher at 110.00-112.00 and dressed 5.00 higher at 175.00, when compared to the last reported market on Tue. In the Western Cornbelt, when compared to last week, live cash trades 2.00-5.00 higher at 110.00-112.00 and dressed steady at 175.00.

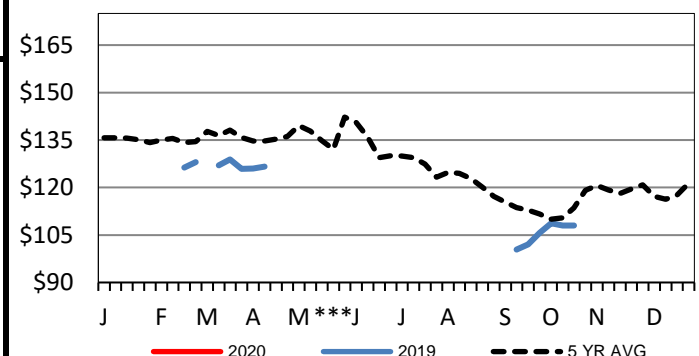
## 5-Area Formula Carcass Weight

Last Week's Weight = 873 lbs



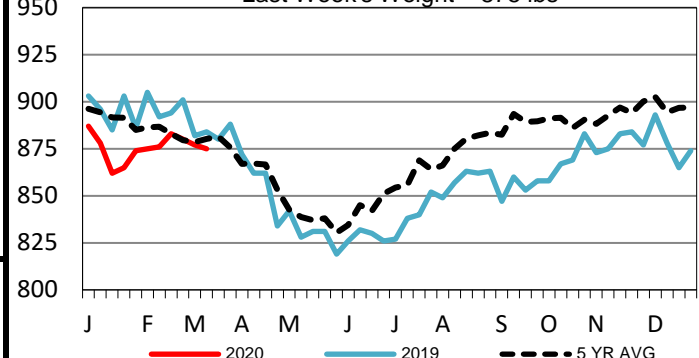
## Colorado Live Wkly Steer Weighted Avg

Last Week's Price = N/A



## Colorado Formula Carcass Weights

Last Week's Weight = 875 lbs



## USDA Livestock, Poultry and Grain Market News

St. Joseph, Missouri

Phone: 816-676-7000

[stjoe.lpgmn@ams.usda.gov](mailto:stjoe.lpgmn@ams.usda.gov)