

Daily Direct Steer and Heifer Slaughter Cattle Summary

For Trade on:

Monday, March 16, 2020

LM CT100	5-AREA	LM CT109
Neg. Cash Volume:	48,989	Dressed Formula Vol: 54,206
Live Steer Avg:	\$107.77	Steer/Heifer Avg: \$180.48
Live Heifer Avg:	\$106.55	Dressed Neg. Grid Vol: 988
Dressed Steer Avg:	\$170.19	Steer/Heifer Avg: \$182.41
Dressed Heifer Avg:	\$170.04	TOTAL VOLUME: 104,183
LM CT106	TOTAL WK TO DATE VOLUME:	104,183
Committed:	101,459	Delivered: 73,058

LM CT118	TX-OK-NM	LM CT109
Neg. Cash Volume:	7,782	Dressed Formula Vol: 18,536
Live Steer Avg:	\$108.84	Steer/Heifer Avg: \$179.02
Live Heifer Avg:	\$107.01	Dressed Neg. Grid Vol: 34
Dressed Steer Avg:	N/A	Steer/Heifer Avg: \$178.54
Dressed Heifer Avg:	N/A	TOTAL VOLUME: 26,352
LM CT106	TOTAL WK TO DATE VOLUME:	26,352
Committed:	36,883	Delivered: 23,243

LM CT121	KANSAS	LM CT109
Neg. Cash Volume:	13,218	Dressed Formula Vol: 20,820
Live Steer Avg:	\$108.88	Steer/Heifer Avg: \$178.83
Live Heifer Avg:	\$108.45	Dressed Neg. Grid Vol: 0
Dressed Steer Avg:	N/A	Steer/Heifer Avg: N/A
Dressed Heifer Avg:	N/A	TOTAL VOLUME: 34,038
LM CT106	TOTAL WK TO DATE VOLUME:	34,038
Committed:	13,879	Delivered: 17,081

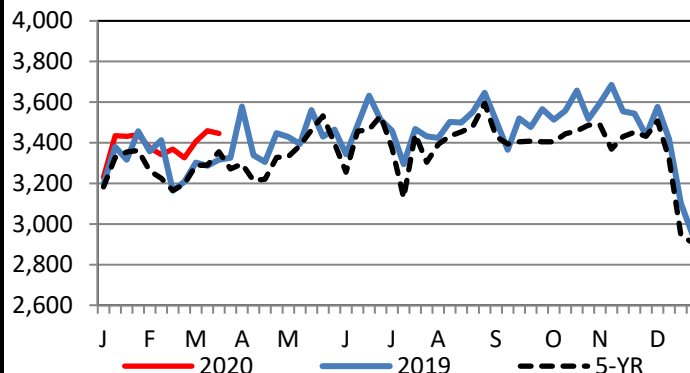
LM CT124	NEBRASKA	LM CT109
Neg. Cash Volume:	20,814	Dressed Formula Vol: 8,564
Live Steer Avg:	\$105.12	Steer/Heifer Avg: \$184.79
Live Heifer Avg:	\$105.50	Dressed Neg. Grid Vol: 357
Dressed Steer Avg:	\$170.00	Steer/Heifer Avg: \$185.31
Dressed Heifer Avg:	\$170.00	TOTAL VOLUME: 29,735
LM CT106	TOTAL WK TO DATE VOLUME:	29,735
Committed:	26,714	Delivered: 14,491

LM CT134	COLORADO	LM CT109
Neg. Cash Volume:	0	Dressed Formula Vol: 4,758
Live Steer Avg:	N/A	Steer/Heifer Avg: \$183.77
Live Heifer Avg:	N/A	Dressed Neg. Grid Vol: 231
Dressed Steer Avg:	N/A	Steer/Heifer Avg: \$182.28
Dressed Heifer Avg:	N/A	TOTAL VOLUME: 4,989
LM CT106	TOTAL WK TO DATE VOLUME:	4,989
Committed:	14,806	Delivered: 7,332

LM CT137	IA-MN	LM CT109
Neg. Cash Volume:	7,175	Dressed Formula Vol: 1,566
Live Steer Avg:	\$109.00	Steer/Heifer Avg: \$185.97
Live Heifer Avg:	\$103.40	Dressed Neg. Grid Vol: 366
Dressed Steer Avg:	\$170.53	Steer/Heifer Avg: \$180.01
Dressed Heifer Avg:	\$170.19	TOTAL VOLUME: 9,107
LM CT106	TOTAL WK TO DATE VOLUME:	9,107
Committed:	9,177	Delivered: 10,911

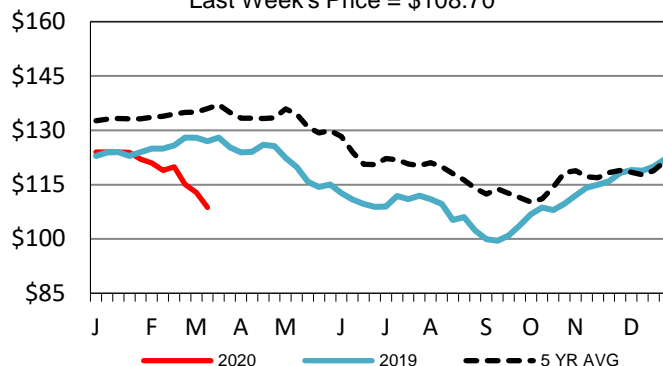
In the Southern Plains and Nebraska negotiated cash trading and demand moderate. Compared to last week in Kansas the bulk of live cash trades mostly steady at 110.00. Compared to the prior week in the Texas Panhandle live cash trades steady to 5.00 lower at 105.00-110.00. On Monday in Nebraska compared to the previous week live and dressed cash trades 5.00 lower at 105.00 and 170.00, respectively. For Monday in the Western Cornbelt negotiated cash trading limited on light demand. A few early live and dressed cash trades moved at 103.00 and 170.00, respectively. Not enough trades for a full market trend. Last week live cash trades moved 105.00-110.00 and dressed cash trades mostly 175.00.

Boxed Beef Formula Load Count



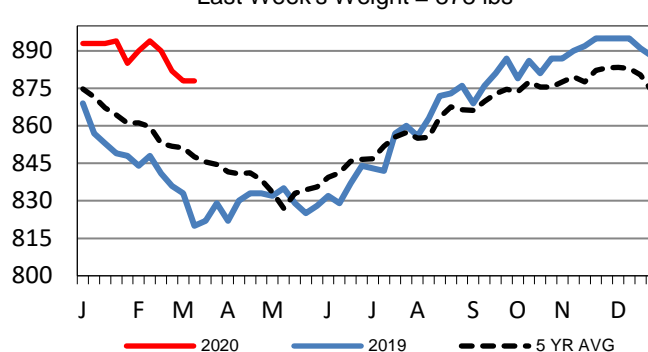
Kansas Weekly Live Steer Weighted Average

Last Week's Price = \$108.70



Kansas Formula Carcass Weights

Last Week's Weight = 878 lbs



USDA Livestock, Poultry and Grain Market News

St. Joseph, Missouri

Phone: 816-676-7000

stjoe.lpgmn@ams.usda.gov