

Daily Direct Steer and Heifer Slaughter Cattle Summary

For Trade on:

Friday, February 21, 2020

LM CT100	5-AREA	LM CT109
Neg. Cash Volume:	10,736	Dressed Formula Vol: 46,977
Live Steer Avg:	\$119.33	Steer/Heifer Avg: \$191.12
Live Heifer Avg:	\$118.91	Dressed Neg. Grid Vol: 545
Dressed Steer Avg:	\$189.96	Steer/Heifer Avg: \$192.89
Dressed Heifer Avg:	\$189.98	TOTAL VOLUME: 58,258
LM CT106	TOTAL WK TO DATE VOLUME:	286,383
Committed:	72,875	Delivered: 83,801

LM CT118	TX-OK-NM	LM CT109
Neg. Cash Volume:	0	Dressed Formula Vol: 13,959
Live Steer Avg:	N/A	Steer/Heifer Avg: \$188.52
Live Heifer Avg:	N/A	Dressed Neg. Grid Vol: 0
Dressed Steer Avg:	N/A	Steer/Heifer Avg: N/A
Dressed Heifer Avg:	N/A	TOTAL VOLUME: 13,959
LM CT106	TOTAL WK TO DATE VOLUME:	70,401
Committed:	3,092	Delivered: 20,767

LM CT121	KANSAS	LM CT109
Neg. Cash Volume:	37	Dressed Formula Vol: 13,902
Live Steer Avg:	N/A	Steer/Heifer Avg: \$189.99
Live Heifer Avg:	N/A	Dressed Neg. Grid Vol: 0
Dressed Steer Avg:	N/A	Steer/Heifer Avg: N/A
Dressed Heifer Avg:	N/A	TOTAL VOLUME: 13,939
LM CT106	TOTAL WK TO DATE VOLUME:	88,239
Committed:	30,922	Delivered: 25,088

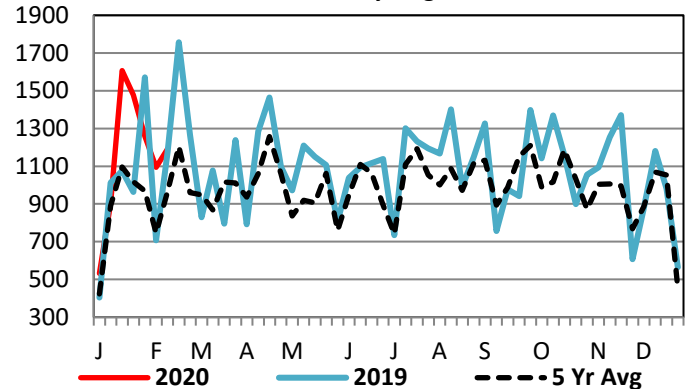
LM CT124	NEBRASKA	LM CT109
Neg. Cash Volume:	1,682	Dressed Formula Vol: 7,334
Live Steer Avg:	\$119.00	Steer/Heifer Avg: \$193.62
Live Heifer Avg:	N/A	Dressed Neg. Grid Vol: 225
Dressed Steer Avg:	\$190.04	Steer/Heifer Avg: \$192.22
Dressed Heifer Avg:	\$190.00	TOTAL VOLUME: 9,241
LM CT106	TOTAL WK TO DATE VOLUME:	62,918
Committed:	6,292	Delivered: 12,642

LM CT134	COLORADO	LM CT109
Neg. Cash Volume:	0	Dressed Formula Vol: 8,397
Live Steer Avg:	N/A	Steer/Heifer Avg: \$194.76
Live Heifer Avg:	N/A	Dressed Neg. Grid Vol: 159
Dressed Steer Avg:	N/A	Steer/Heifer Avg: \$194.98
Dressed Heifer Avg:	N/A	TOTAL VOLUME: 8,556
LM CT106	TOTAL WK TO DATE VOLUME:	26,010
Committed:	15,121	Delivered: 12,719

LM CT137	IA-MN	LM CT109
Neg. Cash Volume:	9,017	Dressed Formula Vol: 3,635
Live Steer Avg:	\$119.39	Steer/Heifer Avg: \$192.32
Live Heifer Avg:	\$118.91	Dressed Neg. Grid Vol: 161
Dressed Steer Avg:	\$189.94	Steer/Heifer Avg: \$191.76
Dressed Heifer Avg:	\$189.98	TOTAL VOLUME: 12,813
LM CT106	TOTAL WK TO DATE VOLUME:	40,015
Committed:	17,448	Delivered: 12,585

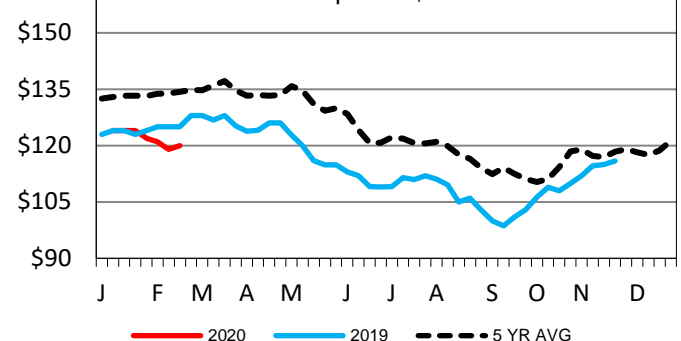
On Friday negotiated cash trading was limited on light demand in Kansas, Nebraska and Western Cornbelt. Not enough trades in these regions for a market trend. In the Texas Panhandle negotiated cash trading was at a standstill. In the Southern Plains the last reported market was on Wednesday with live cash trades at 120.00. In Nebraska and Western Cornbelt the last reported market was on Thursday with the bulk of live cash trades from 119.00-120.00 and the bulk of dressed cash trades at 190.00.

Boxed Beef 22+ Day Negotiated Sales



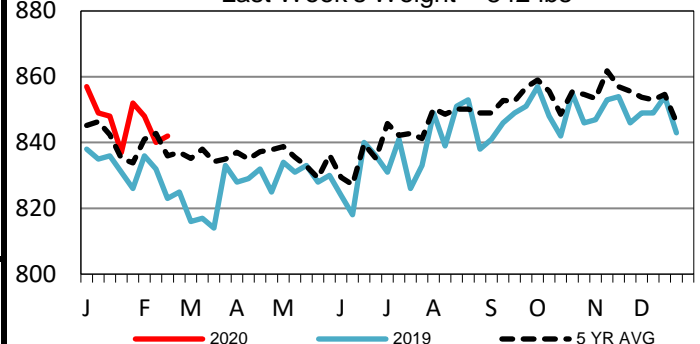
TX-OK-NM Wkly Live Steer Wtd Avg

Last week's price= \$120.00



TX-OK-NM Formula Carcass Weights

Last Week's Weight = 842 lbs



USDA Livestock, Poultry and Grain Market News

St. Joseph, Missouri

Phone: 816-676-7000

stjoe.lpgmn@ams.usda.gov