

Daily Direct Steer and Heifer Slaughter Cattle Summary

For Trade on:

LM CT100	5-AREA	LM CT109
Neg. Cash Volume:	6,047	Dressed Formula Vol: 48,015
Live Steer Avg:	\$118.74	Steer/Heifer Avg: \$201.15
Live Heifer Avg:	\$118.40	Dressed Neg. Grid Vol: 1,445
Dressed Steer Avg:	\$187.62	Steer/Heifer Avg: \$205.25
Dressed Heifer Avg:	\$191.00	TOTAL VOLUME: 55,507
LM CT106	TOTAL WK TO DATE VOLUME:	290,545
Committed:	51,344	Delivered: 68,205

LM CT118	TX-OK-NM	LM CT109
Neg. Cash Volume:	0	Dressed Formula Vol: 12,661
Live Steer Avg:	N/A	Steer/Heifer Avg: \$194.03
Live Heifer Avg:	N/A	Dressed Neg. Grid Vol: 0
Dressed Steer Avg:	N/A	Steer/Heifer Avg: N/A
Dressed Heifer Avg:	N/A	TOTAL VOLUME: 12,661
LM CT106	TOTAL WK TO DATE VOLUME:	71,321
Committed:	25,941	Delivered: 20,900

LM CT121	KANSAS	LM CT109
Neg. Cash Volume:	1,423	Dressed Formula Vol: 12,205
Live Steer Avg:	\$118.00	Steer/Heifer Avg: \$196.31
Live Heifer Avg:	\$118.00	Dressed Neg. Grid Vol: 0
Dressed Steer Avg:	N/A	Steer/Heifer Avg: N/A
Dressed Heifer Avg:	N/A	TOTAL VOLUME: 13,628
LM CT106	TOTAL WK TO DATE VOLUME:	90,082
Committed:	12,027	Delivered: 15,299

LM CT124	NEBRASKA	LM CT109
Neg. Cash Volume:	1,846	Dressed Formula Vol: 15,843
Live Steer Avg:	\$119.00	Steer/Heifer Avg: \$209.46
Live Heifer Avg:	\$120.00	Dressed Neg. Grid Vol: 813
Dressed Steer Avg:	\$186.92	Steer/Heifer Avg: \$204.04
Dressed Heifer Avg:	N/A	TOTAL VOLUME: 18,502
LM CT106	TOTAL WK TO DATE VOLUME:	76,891
Committed:	6,368	Delivered: 16,989

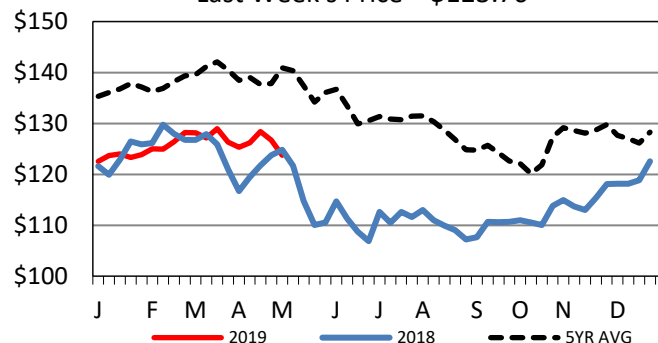
LM CT134	COLORADO	LM CT109
Neg. Cash Volume:	0	Dressed Formula Vol: 4,507
Live Steer Avg:	N/A	Steer/Heifer Avg: \$204.45
Live Heifer Avg:	N/A	Dressed Neg. Grid Vol: 0
Dressed Steer Avg:	N/A	Steer/Heifer Avg: N/A
Dressed Heifer Avg:	N/A	TOTAL VOLUME: 4,507
LM CT106	TOTAL WK TO DATE VOLUME:	14,446
Committed:	1,512	Delivered: 6,001

LM CT137	IA-MN	LM CT109
Neg. Cash Volume:	2,778	Dressed Formula Vol: 3,023
Live Steer Avg:	\$119.08	Steer/Heifer Avg: \$201.58
Live Heifer Avg:	\$119.00	Dressed Neg. Grid Vol: 644
Dressed Steer Avg:	\$188.26	Steer/Heifer Avg: \$206.83
Dressed Heifer Avg:	\$191.00	TOTAL VOLUME: 6,445
LM CT106	TOTAL WK TO DATE VOLUME:	38,475
Committed:	5,496	Delivered: 9,016

In Kansas, Nebraska and the Western Cornbelt negotiated cash trade limited on very light demand. In Kansas few live cash trades at 118.00. In the Western Cornbelt few live cash trades at 119.00. However, not enough for a full market trend. For Thursday in the Texas Panhandle negotiated cash trade at a standstill. The last fully reported market in the Southern Plains was Tuesday with live cash trades at 120.00. The last fully reported market in Nebraska and the Western Cornbelt was Wednesday. In Nebraska live and dressed cash trades 120.00-121.00 and 189.00-194.00, respectively. In the Western Cornbelt live and dressed cash trades moved mostly at 120.00 and 190.00-192.00, respectively.

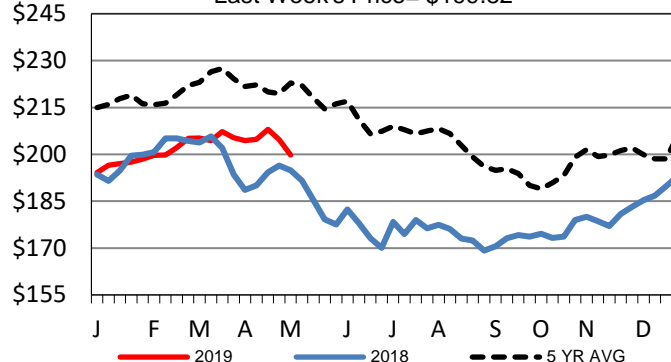
5-Area Live Steer Weighted Average

Last Week's Price = \$123.76



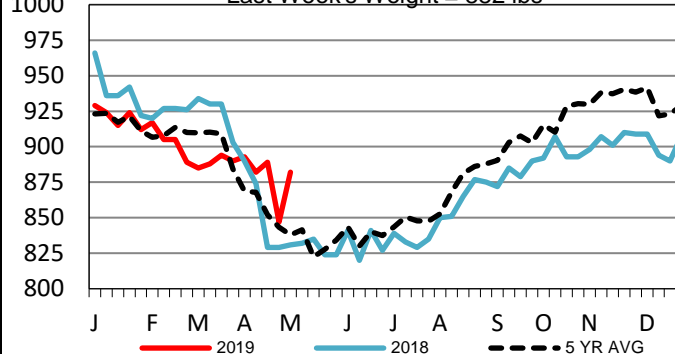
Iowa-Minnesota Wkly Dressed Steer Wtd Avg

Last Week's Price = \$199.82



Iowa-Minnesota Formula Carcass Weights

Last Week's Weight = 882 lbs



USDA Livestock, Poultry and Grain Market News

St. Joseph, Missouri

Phone: 816-676-7000

stjoe.lpgmn@ams.usda.gov