

## Daily Direct Steer and Heifer Slaughter Cattle Summary

For Trade on:

Wednesday, May 08, 2019

<a href="#">LM CT100</a>	<b>5-AREA</b>	<a href="#">LM CT109</a>
<b>Neg. Cash Volume:</b>	43,954	<b>Dressed Formula Vol:</b> 29,748
Live Steer Avg:	\$120.38	Steer/Heifer Avg: \$201.49
Live Heifer Avg:	\$120.14	<b>Dressed Neg. Grid Vol:</b> 1,602
Dressed Steer Avg:	\$190.63	Steer/Heifer Avg: \$201.03
Dressed Heifer Avg:	\$191.48	<b>TOTAL VOLUME:</b> <b>75,304</b>
<a href="#">LM CT106</a>	<b>TOTAL WK TO DATE VOLUME:</b>	<b>235,038</b>
<b>Committed:</b>	100,313	<b>Delivered:</b> 74,770

<a href="#">LM CT118</a>	<b>TX-OK-NM</b>	<a href="#">LM CT109</a>
<b>Neg. Cash Volume:</b>	880	<b>Dressed Formula Vol:</b> 10,055
Live Steer Avg:	\$120.00	Steer/Heifer Avg: \$195.94
Live Heifer Avg:	\$120.00	<b>Dressed Neg. Grid Vol:</b> 0
Dressed Steer Avg:	\$187.00	Steer/Heifer Avg: N/A
Dressed Heifer Avg:	N/A	<b>TOTAL VOLUME:</b> <b>10,935</b>
<a href="#">LM CT106</a>	<b>TOTAL WK TO DATE VOLUME:</b>	<b>58,660</b>
<b>Committed:</b>	15,386	<b>Delivered:</b> 23,893

<a href="#">LM CT121</a>	<b>KANSAS</b>	<a href="#">LM CT109</a>
<b>Neg. Cash Volume:</b>	3,200	<b>Dressed Formula Vol:</b> 9,472
Live Steer Avg:	\$119.47	Steer/Heifer Avg: \$199.89
Live Heifer Avg:	\$119.40	<b>Dressed Neg. Grid Vol:</b> 0
Dressed Steer Avg:	N/A	Steer/Heifer Avg: N/A
Dressed Heifer Avg:	N/A	<b>TOTAL VOLUME:</b> <b>12,672</b>
<a href="#">LM CT106</a>	<b>TOTAL WK TO DATE VOLUME:</b>	<b>76,454</b>
<b>Committed:</b>	10,345	<b>Delivered:</b> 15,862

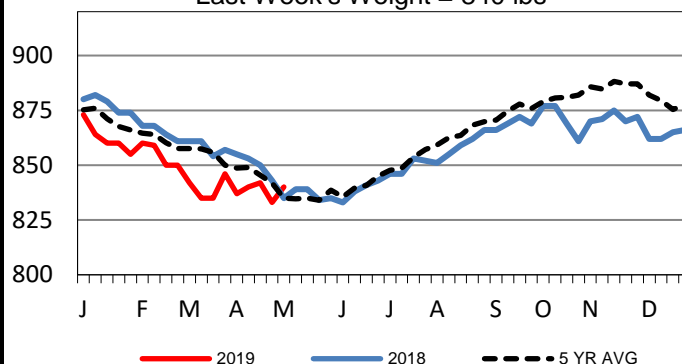
<a href="#">LM CT124</a>	<b>NEBRASKA</b>	<a href="#">LM CT109</a>
<b>Neg. Cash Volume:</b>	28,358	<b>Dressed Formula Vol:</b> 5,464
Live Steer Avg:	\$120.50	Steer/Heifer Avg: \$209.67
Live Heifer Avg:	\$120.41	<b>Dressed Neg. Grid Vol:</b> 829
Dressed Steer Avg:	\$190.58	Steer/Heifer Avg: \$198.31
Dressed Heifer Avg:	\$191.44	<b>TOTAL VOLUME:</b> <b>34,651</b>
<a href="#">LM CT106</a>	<b>TOTAL WK TO DATE VOLUME:</b>	<b>58,389</b>
<b>Committed:</b>	42,874	<b>Delivered:</b> 17,977

<a href="#">LM CT134</a>	<b>COLORADO</b>	<a href="#">LM CT109</a>
<b>Neg. Cash Volume:</b>	0	<b>Dressed Formula Vol:</b> 3,029
Live Steer Avg:	N/A	Steer/Heifer Avg: \$208.78
Live Heifer Avg:	N/A	<b>Dressed Neg. Grid Vol:</b> 0
Dressed Steer Avg:	N/A	Steer/Heifer Avg: N/A
Dressed Heifer Avg:	N/A	<b>TOTAL VOLUME:</b> <b>3,029</b>
<a href="#">LM CT106</a>	<b>TOTAL WK TO DATE VOLUME:</b>	<b>9,939</b>
<b>Committed:</b>	13,843	<b>Delivered:</b> 6,899

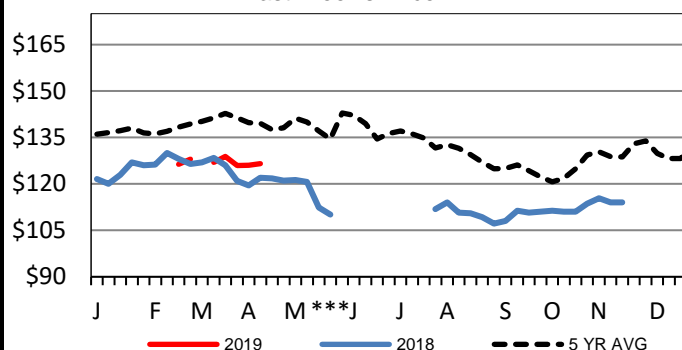
<a href="#">LM CT137</a>	<b>IA-MN</b>	<a href="#">LM CT109</a>
<b>Neg. Cash Volume:</b>	11,516	<b>Dressed Formula Vol:</b> 1,765
Live Steer Avg:	\$120.65	Steer/Heifer Avg: \$203.69
Live Heifer Avg:	\$120.11	<b>Dressed Neg. Grid Vol:</b> 813
Dressed Steer Avg:	\$190.78	Steer/Heifer Avg: \$204.33
Dressed Heifer Avg:	\$191.54	<b>TOTAL VOLUME:</b> <b>14,094</b>
<a href="#">LM CT106</a>	<b>TOTAL WK TO DATE VOLUME:</b>	<b>32,030</b>
<b>Committed:</b>	17,865	<b>Delivered:</b> 10,139

In the Southern Plains negotiated cash trade limited on light demand. Not enough trades for a full market trend. The last fully reported market was on Tuesday with live cash trades at 120.00. In Nebraska negotiated cash trade and demand moderate. Compared to last week live cash trades 3.00 to 4.00 lower at 120.00 to 121.00 and dressed 4.00 to 6.00 lower at 189.00 to 194.00. In the Western Cornbelt negotiated cash trade slow to moderate with moderate demand. Compared to the prior week live cash trades 3.00 to 7.00 lower mostly at 120.00 and dressed 8.00 to 10.00 lower ranging 190.00 to 192.00.

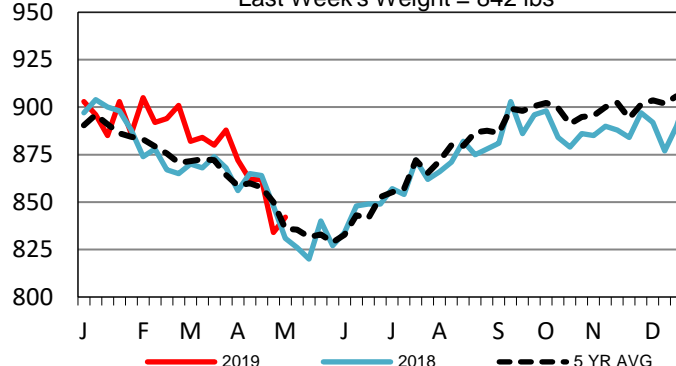
**5-Area Formula Carcass Weight**  
Last Week's Weight = 840 lbs



**Colorado Live Wkly Steer Weighted Avg**  
Last Week's Price = NA



**Colorado Formula Carcass Weights**  
Last Week's Weight = 842 lbs



## USDA Livestock, Poultry and Grain Market News

St. Joseph, Missouri

Phone: 816-676-7000

[stjoe.lpgmn@ams.usda.gov](mailto:stjoe.lpgmn@ams.usda.gov)