

Daily Direct Steer and Heifer Slaughter Cattle Summary

For Trade on:

Wednesday, May 01, 2019

LM CT100	5-AREA	LM CT109
Neg. Cash Volume:	52,443	Dressed Formula Vol: 28,930
Live Steer Avg:	\$124.13	Steer/Heifer Avg: \$204.18
Live Heifer Avg:	\$123.72	Dressed Neg. Grid Vol: 687
Dressed Steer Avg:	\$198.35	Steer/Heifer Avg: \$206.52
Dressed Heifer Avg:	\$197.72	TOTAL VOLUME: 82,060
LM CT106	TOTAL WK TO DATE VOLUME:	239,226
Committed:	100,009	Delivered: 72,913

LM CT118	TX-OK-NM	LM CT109
Neg. Cash Volume:	77	Dressed Formula Vol: 10,297
Live Steer Avg:	N/A	Steer/Heifer Avg: \$202.22
Live Heifer Avg:	N/A	Dressed Neg. Grid Vol: 0
Dressed Steer Avg:	N/A	Steer/Heifer Avg: N/A
Dressed Heifer Avg:	N/A	TOTAL VOLUME: 10,374
LM CT106	TOTAL WK TO DATE VOLUME:	56,921
Committed:	13,529	Delivered: 20,503

LM CT121	KANSAS	LM CT109
Neg. Cash Volume:	3,707	Dressed Formula Vol: 7,549
Live Steer Avg:	\$122.00	Steer/Heifer Avg: \$201.80
Live Heifer Avg:	\$121.79	Dressed Neg. Grid Vol: 0
Dressed Steer Avg:	\$199.13	Steer/Heifer Avg: N/A
Dressed Heifer Avg:	\$194.00	TOTAL VOLUME: 11,256
LM CT106	TOTAL WK TO DATE VOLUME:	59,062
Committed:	10,299	Delivered: 18,338

LM CT124	NEBRASKA	LM CT109
Neg. Cash Volume:	30,905	Dressed Formula Vol: 5,526
Live Steer Avg:	\$123.96	Steer/Heifer Avg: \$207.59
Live Heifer Avg:	\$124.03	Dressed Neg. Grid Vol: 223
Dressed Steer Avg:	\$196.96	Steer/Heifer Avg: \$202.72
Dressed Heifer Avg:	\$198.10	TOTAL VOLUME: 36,654
LM CT106	TOTAL WK TO DATE VOLUME:	75,835
Committed:	37,554	Delivered: 18,777

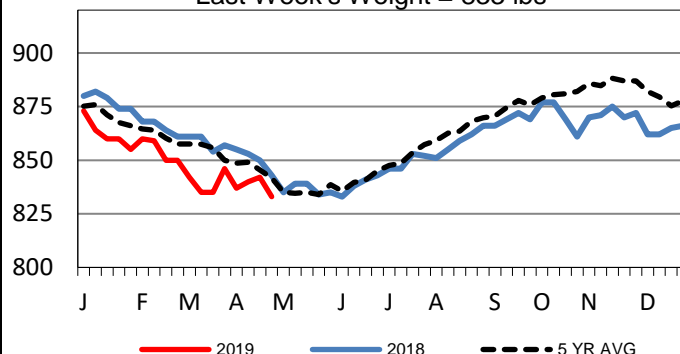
LM CT134	COLORADO	LM CT109
Neg. Cash Volume:	0	Dressed Formula Vol: 3,481
Live Steer Avg:	N/A	Steer/Heifer Avg: \$207.65
Live Heifer Avg:	N/A	Dressed Neg. Grid Vol: 0
Dressed Steer Avg:	N/A	Steer/Heifer Avg: N/A
Dressed Heifer Avg:	N/A	TOTAL VOLUME: 3,481
LM CT106	TOTAL WK TO DATE VOLUME:	11,290
Committed:	17,033	Delivered: 7,112

LM CT137	IA-MN	LM CT109
Neg. Cash Volume:	17,754	Dressed Formula Vol: 2,342
Live Steer Avg:	\$125.40	Steer/Heifer Avg: \$207.41
Live Heifer Avg:	\$125.67	Dressed Neg. Grid Vol: 464
Dressed Steer Avg:	\$200.10	Steer/Heifer Avg: \$208.35
Dressed Heifer Avg:	\$196.98	TOTAL VOLUME: 20,560
LM CT106	TOTAL WK TO DATE VOLUME:	36,408
Committed:	21,594	Delivered: 8,183

Negotiated cash trade light on light demand in Kansas with live trades mostly steady at 122.00. In Nebraska trading and demand moderate. Compared to Tuesday, live purchases steady at 124.00. Dressed 194.00-200.00, with the bulk steady at 200.00. For the week in the Western Cornbelt, trade and demand moderate. Thus far, for the week in the Western Cornbelt, the bulk of the live cash trades steady to 4.00 lower at 125.00-126.00. Dressed trades mostly 4.00 to 6.00 lower with the bulk at 200.00. Trading in Texas has been at a standstill with the last established market on Tuesday with live purchases trading at 123.00.

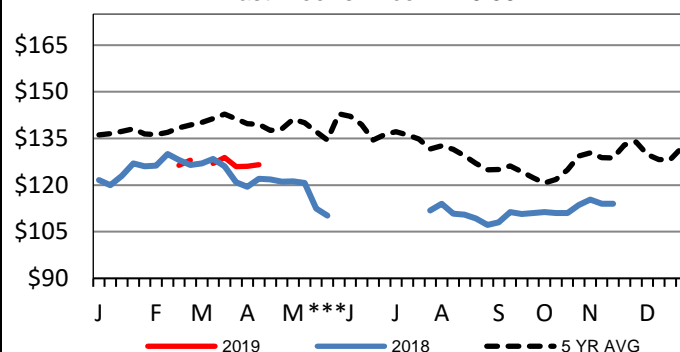
5-Area Formula Carcass Weight

Last Week's Weight = 833 lbs



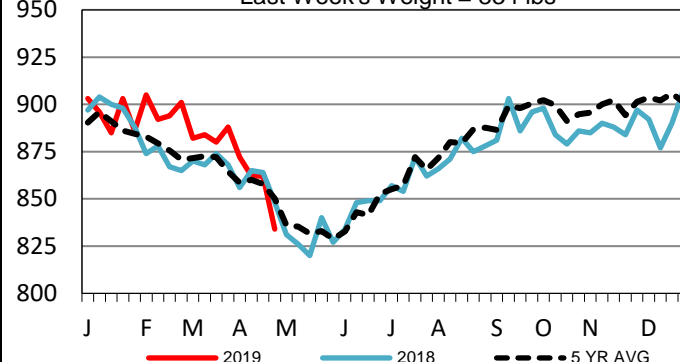
Colorado Live Wkly Steer Weighted Avg

Last Week's Price = 126.56



Colorado Formula Carcass Weights

Last Week's Weight = 834 lbs



USDA Livestock, Poultry and Grain Market News

St. Joseph, Missouri

Phone: 816-676-7000

stjoe.lpgmn@ams.usda.gov