

## Daily Direct Steer and Heifer Slaughter Cattle Summary

For Trade on:

<a href="#">LM CT100</a>	<b>5-AREA</b>	<a href="#">LM CT109</a>
<b>Neg. Cash Volume:</b>	43,658	<b>Dressed Formula Vol:</b> 45,278
<b>Live Steer Avg:</b>	\$126.30	<b>Steer/Heifer Avg:</b> \$204.52
<b>Live Heifer Avg:</b>	\$125.40	<b>Dressed Neg. Grid Vol:</b> 1,169
<b>Dressed Steer Avg:</b>	\$204.21	<b>Steer/Heifer Avg:</b> \$207.40
<b>Dressed Heifer Avg:</b>	\$204.74	<b>TOTAL VOLUME:</b> 90,105
<a href="#">LM CT106</a>	<b>TOTAL WK TO DATE VOLUME:</b>	<b>258,777</b>
<b>Committed:</b>	97,707	<b>Delivered:</b> 68,488

<a href="#">LM CT118</a>	<b>TX-OK-NM</b>	<a href="#">LM CT109</a>
<b>Neg. Cash Volume:</b>	549	<b>Dressed Formula Vol:</b> 13,390
<b>Live Steer Avg:</b>	N/A	<b>Steer/Heifer Avg:</b> \$200.56
<b>Live Heifer Avg:</b>	N/A	<b>Dressed Neg. Grid Vol:</b> 0
<b>Dressed Steer Avg:</b>	N/A	<b>Steer/Heifer Avg:</b> N/A
<b>Dressed Heifer Avg:</b>	N/A	<b>TOTAL VOLUME:</b> 13,939
<a href="#">LM CT106</a>	<b>TOTAL WK TO DATE VOLUME:</b>	<b>76,445</b>
<b>Committed:</b>	26,064	<b>Delivered:</b> 22,880

<a href="#">LM CT121</a>	<b>KANSAS</b>	<a href="#">LM CT109</a>
<b>Neg. Cash Volume:</b>	2,659	<b>Dressed Formula Vol:</b> 13,888
<b>Live Steer Avg:</b>	\$123.21	<b>Steer/Heifer Avg:</b> \$201.58
<b>Live Heifer Avg:</b>	\$122.59	<b>Dressed Neg. Grid Vol:</b> 0
<b>Dressed Steer Avg:</b>	\$205.00	<b>Steer/Heifer Avg:</b> N/A
<b>Dressed Heifer Avg:</b>	N/A	<b>TOTAL VOLUME:</b> 16,547
<a href="#">LM CT106</a>	<b>TOTAL WK TO DATE VOLUME:</b>	<b>68,186</b>
<b>Committed:</b>	5,566	<b>Delivered:</b> 14,140

<a href="#">LM CT124</a>	<b>NEBRASKA</b>	<a href="#">LM CT109</a>
<b>Neg. Cash Volume:</b>	27,311	<b>Dressed Formula Vol:</b> 12,024
<b>Live Steer Avg:</b>	\$126.15	<b>Steer/Heifer Avg:</b> \$210.68
<b>Live Heifer Avg:</b>	\$126.15	<b>Dressed Neg. Grid Vol:</b> 680
<b>Dressed Steer Avg:</b>	\$204.14	<b>Steer/Heifer Avg:</b> \$206.97
<b>Dressed Heifer Avg:</b>	\$203.87	<b>TOTAL VOLUME:</b> 40,015
<a href="#">LM CT106</a>	<b>TOTAL WK TO DATE VOLUME:</b>	<b>63,751</b>
<b>Committed:</b>	34,021	<b>Delivered:</b> 17,042

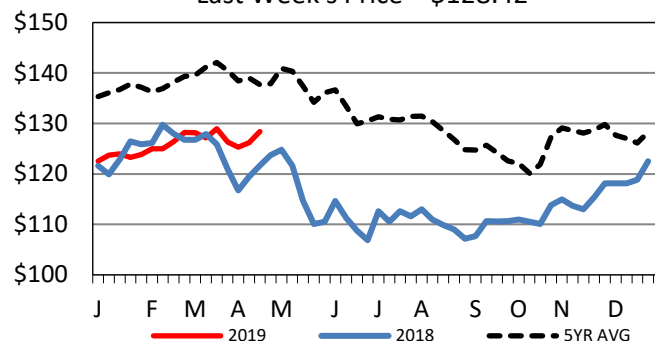
<a href="#">LM CT134</a>	<b>COLORADO</b>	<a href="#">LM CT109</a>
<b>Neg. Cash Volume:</b>	0	<b>Dressed Formula Vol:</b> 3,377
<b>Live Steer Avg:</b>	N/A	<b>Steer/Heifer Avg:</b> \$207.46
<b>Live Heifer Avg:</b>	N/A	<b>Dressed Neg. Grid Vol:</b> 0
<b>Dressed Steer Avg:</b>	N/A	<b>Steer/Heifer Avg:</b> N/A
<b>Dressed Heifer Avg:</b>	N/A	<b>TOTAL VOLUME:</b> 3,377
<a href="#">LM CT106</a>	<b>TOTAL WK TO DATE VOLUME:</b>	<b>14,560</b>
<b>Committed:</b>	15,703	<b>Delivered:</b> 4,901

<a href="#">LM CT137</a>	<b>IA-MN</b>	<a href="#">LM CT109</a>
<b>Neg. Cash Volume:</b>	13,139	<b>Dressed Formula Vol:</b> 2,878
<b>Live Steer Avg:</b>	\$128.63	<b>Steer/Heifer Avg:</b> \$208.08
<b>Live Heifer Avg:</b>	\$126.71	<b>Dressed Neg. Grid Vol:</b> 489
<b>Dressed Steer Avg:</b>	\$204.28	<b>Steer/Heifer Avg:</b> \$208.01
<b>Dressed Heifer Avg:</b>	\$205.49	<b>TOTAL VOLUME:</b> 16,506
<a href="#">LM CT106</a>	<b>TOTAL WK TO DATE VOLUME:</b>	<b>36,359</b>
<b>Committed:</b>	16,353	<b>Delivered:</b> 9,525

Negotiated cash trade moderate on moderate demand in Nebraska and the Western Cornbelt. In Nebraska compared to last week, live purchases 3.00 to 5.00 lower at 125.00-127.00 and dressed 202.00-205.00 with the bulk trading mostly 3.00 lower at 205.00. In the Western Cornbelt compared to Wednesday, live purchases 2.00 lower at 128.00 Compared to last week, dressed purchases 200.00-208.00 with the bulk trading 2.00 to 3.00 lower at 205.00-206.00. Trading in the Southern Plains was limited on light demand. Not enough trades for and adequate market test. The last established market was on Wednesday with live purchases at 126.00.

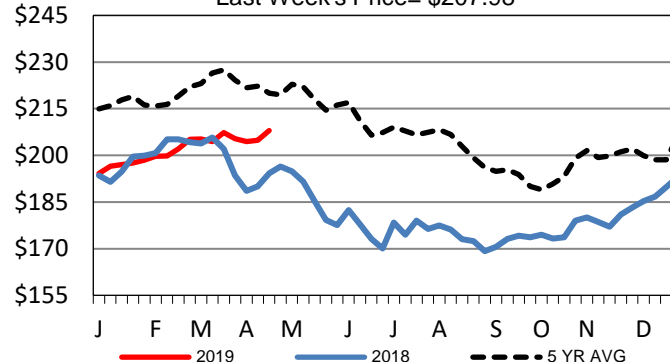
## 5-Area Live Steer Weighted Average

Last Week's Price = \$128.42



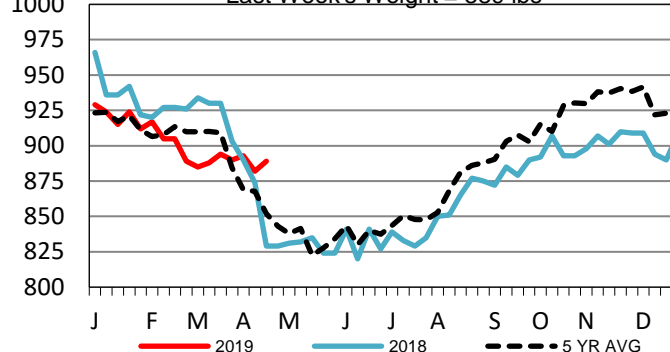
## Iowa-Minnesota Wkly Dressed Steer Wtd Avg

Last Week's Price = \$207.98



## Iowa-Minnesota Formula Carcass Weights

Last Week's Weight = 889 lbs



## USDA Livestock, Poultry and Grain Market News

St. Joseph, Missouri

Phone: 816-676-7000

[stjoe.lpgmn@ams.usda.gov](mailto:stjoe.lpgmn@ams.usda.gov)