

## Daily Direct Steer and Heifer Slaughter Cattle Summary

For Trade on:

Thursday, April 18, 2019

<a href="#">LM CT100</a>	<b>5-AREA</b>	<a href="#">LM CT109</a>
<b>Neg. Cash Volume:</b>	69,152	<b>Dressed Formula Vol:</b> 51,262
<b>Live Steer Avg:</b>	\$130.20	<b>Steer/Heifer Avg:</b> \$203.03
<b>Live Heifer Avg:</b>	\$129.91	<b>Dressed Neg. Grid Vol:</b> 1,525
<b>Dressed Steer Avg:</b>	\$207.84	<b>Steer/Heifer Avg:</b> \$206.39
<b>Dressed Heifer Avg:</b>	\$207.90	<b>TOTAL VOLUME:</b> 121,939
<a href="#">LM CT106</a>	<b>TOTAL WK TO DATE VOLUME:</b>	<b>304,140</b>
<b>Committed:</b>	142,488	<b>Delivered:</b> 71,393

<a href="#">LM CT118</a>	<b>TX-OK-NM</b>	<a href="#">LM CT109</a>
<b>Neg. Cash Volume:</b>	1,597	<b>Dressed Formula Vol:</b> 10,567
<b>Live Steer Avg:</b>	N/A	<b>Steer/Heifer Avg:</b> \$194.94
<b>Live Heifer Avg:</b>	N/A	<b>Dressed Neg. Grid Vol:</b> 0
<b>Dressed Steer Avg:</b>	N/A	<b>Steer/Heifer Avg:</b> N/A
<b>Dressed Heifer Avg:</b>	\$209.00	<b>TOTAL VOLUME:</b> 12,164
<a href="#">LM CT106</a>	<b>TOTAL WK TO DATE VOLUME:</b>	<b>79,679</b>
<b>Committed:</b>	36,281	<b>Delivered:</b> 23,863

<a href="#">LM CT121</a>	<b>KANSAS</b>	<a href="#">LM CT109</a>
<b>Neg. Cash Volume:</b>	752	<b>Dressed Formula Vol:</b> 16,154
<b>Live Steer Avg:</b>	\$127.70	<b>Steer/Heifer Avg:</b> \$198.87
<b>Live Heifer Avg:</b>	\$129.00	<b>Dressed Neg. Grid Vol:</b> 74
<b>Dressed Steer Avg:</b>	N/A	<b>Steer/Heifer Avg:</b> \$195.87
<b>Dressed Heifer Avg:</b>	N/A	<b>TOTAL VOLUME:</b> 16,980
<a href="#">LM CT106</a>	<b>TOTAL WK TO DATE VOLUME:</b>	<b>80,911</b>
<b>Committed:</b>	12,174	<b>Delivered:</b> 16,171

<a href="#">LM CT124</a>	<b>NEBRASKA</b>	<a href="#">LM CT109</a>
<b>Neg. Cash Volume:</b>	36,033	<b>Dressed Formula Vol:</b> 16,418
<b>Live Steer Avg:</b>	\$129.91	<b>Steer/Heifer Avg:</b> \$209.88
<b>Live Heifer Avg:</b>	\$129.89	<b>Dressed Neg. Grid Vol:</b> 713
<b>Dressed Steer Avg:</b>	\$207.83	<b>Steer/Heifer Avg:</b> \$207.77
<b>Dressed Heifer Avg:</b>	\$207.84	<b>TOTAL VOLUME:</b> 53,164
<a href="#">LM CT106</a>	<b>TOTAL WK TO DATE VOLUME:</b>	<b>77,373</b>
<b>Committed:</b>	43,325	<b>Delivered:</b> 15,405

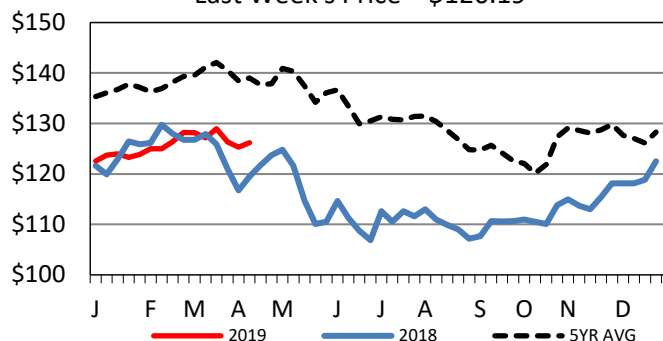
<a href="#">LM CT134</a>	<b>COLORADO</b>	<a href="#">LM CT109</a>
<b>Neg. Cash Volume:</b>	0	<b>Dressed Formula Vol:</b> 5,375
<b>Live Steer Avg:</b>	N/A	<b>Steer/Heifer Avg:</b> \$208.44
<b>Live Heifer Avg:</b>	N/A	<b>Dressed Neg. Grid Vol:</b> 14
<b>Dressed Steer Avg:</b>	N/A	<b>Steer/Heifer Avg:</b> \$205.73
<b>Dressed Heifer Avg:</b>	N/A	<b>TOTAL VOLUME:</b> 5,389
<a href="#">LM CT106</a>	<b>TOTAL WK TO DATE VOLUME:</b>	<b>19,582</b>
<b>Committed:</b>	12,914	<b>Delivered:</b> 6,563

<a href="#">LM CT137</a>	<b>IA-MN</b>	<a href="#">LM CT109</a>
<b>Neg. Cash Volume:</b>	30,770	<b>Dressed Formula Vol:</b> 2,998
<b>Live Steer Avg:</b>	\$130.61	<b>Steer/Heifer Avg:</b> \$206.71
<b>Live Heifer Avg:</b>	\$130.08	<b>Dressed Neg. Grid Vol:</b> 736
<b>Dressed Steer Avg:</b>	\$207.85	<b>Steer/Heifer Avg:</b> \$206.21
<b>Dressed Heifer Avg:</b>	\$207.74	<b>TOTAL VOLUME:</b> 34,504
<a href="#">LM CT106</a>	<b>TOTAL WK TO DATE VOLUME:</b>	<b>46,906</b>
<b>Committed:</b>	37,794	<b>Delivered:</b> 9,391

Negotiated cash trade moderate on very good demand in Nebraska and Western Cornbelt. In Nebraska compared to last week live purchases 2.00 to 4.00 higher at 130.00. Dressed 3.00 higher at 208.00. In the Western Cornbelt live purchases 1.00 to 3.00 higher at 130.00-131.00, bulk at 130.00. Dressed 2.00 to 4.00 higher at 207.00-208.00, bulk at 208.00. Trade in the Southern Plains limited on moderate demand. A few live purchases in Kansas at 129.00, not enough for an adequate market test. The last established market in the Southern Plains was Wed. with live purchases at 126.00.

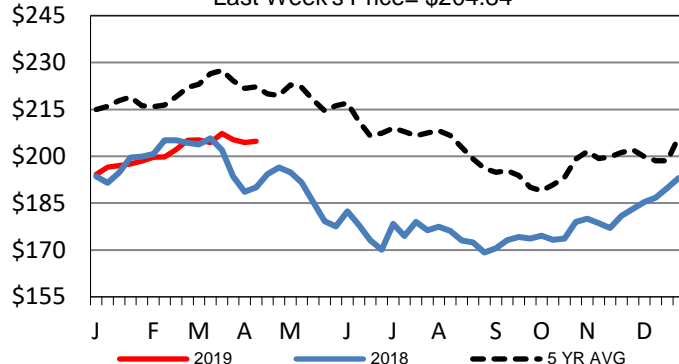
## 5-Area Live Steer Weighted Average

Last Week's Price = \$126.19



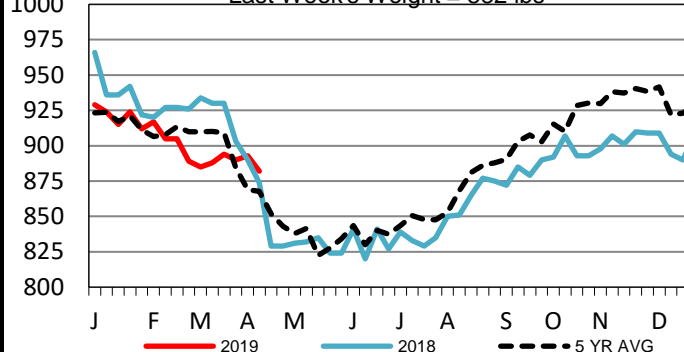
## Iowa-Minnesota Wkly Dressed Steer Wtd Avg

Last Week's Price = \$204.84



## Iowa-Minnesota Formula Carcass Weights

Last Week's Weight = 882 lbs



## USDA Livestock, Poultry and Grain Market News

St. Joseph, Missouri

Phone: 816-676-7000

[stjoe.lpgmn@ams.usda.gov](mailto:stjoe.lpgmn@ams.usda.gov)