

## Daily Direct Steer and Heifer Slaughter Cattle Summary

For Trade on:

<a href="#">LM CT100</a>	<b>5-AREA</b>	<a href="#">LM CT109</a>
<b>Neg. Cash Volume:</b>	1,471	<b>Dressed Formula Vol:</b> 40,391
<b>Live Steer Avg:</b>	\$128.32	<b>Steer/Heifer Avg:</b> \$201.84
<b>Live Heifer Avg:</b>	N/A	<b>Dressed Neg. Grid Vol:</b> 1,622
<b>Dressed Steer Avg:</b>	\$203.84	<b>Steer/Heifer Avg:</b> \$204.57
<b>Dressed Heifer Avg:</b>	\$204.00	<b>TOTAL VOLUME:</b> <b>43,484</b>
<a href="#">LM CT106</a>	<b>TOTAL WK TO DATE VOLUME:</b>	<b>200,571</b>
<b>Committed:</b>	65,202	<b>Delivered:</b> 67,880

<a href="#">LM CT118</a>	<b>TX-OK-NM</b>	<a href="#">LM CT109</a>
<b>Neg. Cash Volume:</b>	145	<b>Dressed Formula Vol:</b> 13,778
<b>Live Steer Avg:</b>	N/A	<b>Steer/Heifer Avg:</b> \$197.04
<b>Live Heifer Avg:</b>	N/A	<b>Dressed Neg. Grid Vol:</b> 258
<b>Dressed Steer Avg:</b>	N/A	<b>Steer/Heifer Avg:</b> \$191.74
<b>Dressed Heifer Avg:</b>	N/A	<b>TOTAL VOLUME:</b> <b>14,181</b>
<a href="#">LM CT106</a>	<b>TOTAL WK TO DATE VOLUME:</b>	<b>67,790</b>
<b>Committed:</b>	30,285	<b>Delivered:</b> 19,743

<a href="#">LM CT121</a>	<b>KANSAS</b>	<a href="#">LM CT109</a>
<b>Neg. Cash Volume:</b>	28	<b>Dressed Formula Vol:</b> 12,441
<b>Live Steer Avg:</b>	N/A	<b>Steer/Heifer Avg:</b> \$198.13
<b>Live Heifer Avg:</b>	N/A	<b>Dressed Neg. Grid Vol:</b> 63
<b>Dressed Steer Avg:</b>	N/A	<b>Steer/Heifer Avg:</b> \$198.45
<b>Dressed Heifer Avg:</b>	N/A	<b>TOTAL VOLUME:</b> <b>12,532</b>
<a href="#">LM CT106</a>	<b>TOTAL WK TO DATE VOLUME:</b>	<b>69,828</b>
<b>Committed:</b>	12,817	<b>Delivered:</b> 18,467

<a href="#">LM CT124</a>	<b>NEBRASKA</b>	<a href="#">LM CT109</a>
<b>Neg. Cash Volume:</b>	120	<b>Dressed Formula Vol:</b> 4,079
<b>Live Steer Avg:</b>	N/A	<b>Steer/Heifer Avg:</b> \$207.16
<b>Live Heifer Avg:</b>	N/A	<b>Dressed Neg. Grid Vol:</b> 818
<b>Dressed Steer Avg:</b>	N/A	<b>Steer/Heifer Avg:</b> \$208.17
<b>Dressed Heifer Avg:</b>	N/A	<b>TOTAL VOLUME:</b> <b>5,017</b>
<a href="#">LM CT106</a>	<b>TOTAL WK TO DATE VOLUME:</b>	<b>26,394</b>
<b>Committed:</b>	13,573	<b>Delivered:</b> 13,688

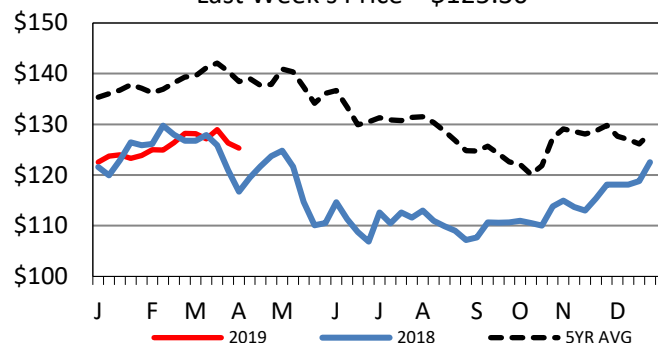
<a href="#">LM CT134</a>	<b>COLORADO</b>	<a href="#">LM CT109</a>
<b>Neg. Cash Volume:</b>	0	<b>Dressed Formula Vol:</b> 7,667
<b>Live Steer Avg:</b>	N/A	<b>Steer/Heifer Avg:</b> \$211.85
<b>Live Heifer Avg:</b>	N/A	<b>Dressed Neg. Grid Vol:</b> 0
<b>Dressed Steer Avg:</b>	N/A	<b>Steer/Heifer Avg:</b> N/A
<b>Dressed Heifer Avg:</b>	N/A	<b>TOTAL VOLUME:</b> <b>7,667</b>
<a href="#">LM CT106</a>	<b>TOTAL WK TO DATE VOLUME:</b>	<b>20,423</b>
<b>Committed:</b>	3,507	<b>Delivered:</b> 6,002

<a href="#">LM CT137</a>	<b>IA-MN</b>	<a href="#">LM CT109</a>
<b>Neg. Cash Volume:</b>	1,178	<b>Dressed Formula Vol:</b> 2,647
<b>Live Steer Avg:</b>	\$128.32	<b>Steer/Heifer Avg:</b> \$207.27
<b>Live Heifer Avg:</b>	N/A	<b>Dressed Neg. Grid Vol:</b> 597
<b>Dressed Steer Avg:</b>	\$203.84	<b>Steer/Heifer Avg:</b> \$206.60
<b>Dressed Heifer Avg:</b>	\$204.00	<b>TOTAL VOLUME:</b> <b>4,422</b>
<a href="#">LM CT106</a>	<b>TOTAL WK TO DATE VOLUME:</b>	<b>16,820</b>
<b>Committed:</b>	5,020	<b>Delivered:</b> 9,980

Trade inactive on light demand in all major feeding regions . Not enough for an adequate market trend. The last established market in the Southern Plains was on Wednesday, with live purchases at 124.00. For the prior week in Nebraska, live trades were from 126.00-126.50 with the bulk at 126.00. Dressed purchases were from 204.00-206.00. In Colorado last week, live trades were at 126.00. For the previous week in the Western Cornbelt, live and dressed trades were from 127.00-128.00 and 204.00-206.00, respectively.

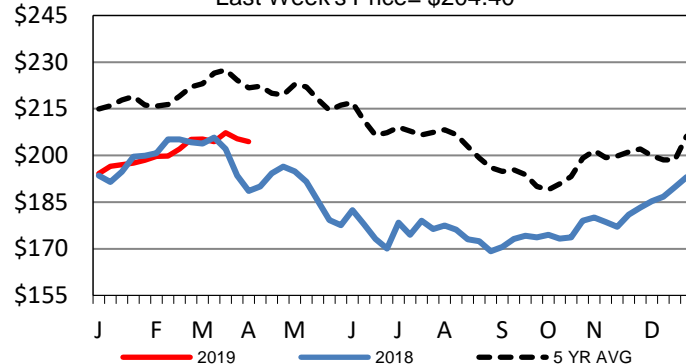
## 5-Area Live Steer Weighted Average

Last Week's Price = \$125.30



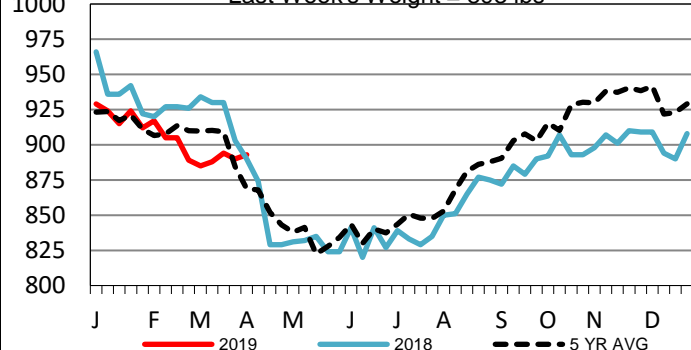
## Iowa-Minnesota Wkly Dressed Steer Wtd Avg

Last Week's Price = \$204.40



## Iowa-Minnesota Formula Carcass Weights

Last Week's Weight = 893 lbs



## USDA Livestock, Poultry and Grain Market News

St. Joseph, Missouri

Phone: 816-676-7000

[stjoe.lpgmn@ams.usda.gov](mailto:stjoe.lpgmn@ams.usda.gov)