

## Daily Direct Steer and Heifer Slaughter Cattle Summary

For Trade on:

Thursday, April 04, 2019

<a href="#">LM CT100</a>	<b>5-AREA</b>	<a href="#">LM CT109</a>
<b>Neg. Cash Volume:</b>	6,790	<b>Dressed Formula Vol:</b> 47,652
Live Steer Avg:	\$125.50	Steer/Heifer Avg: \$205.25
Live Heifer Avg:	\$126.24	<b>Dressed Neg. Grid Vol:</b> 1,374
Dressed Steer Avg:	\$203.94	Steer/Heifer Avg: \$204.14
Dressed Heifer Avg:	\$204.82	<b>TOTAL VOLUME:</b> 55,816
<a href="#">LM CT106</a>	<b>TOTAL WK TO DATE VOLUME:</b>	<b>216,692</b>
<b>Committed:</b>	67,120	<b>Delivered:</b> 73,917

<a href="#">LM CT118</a>	<b>TX-OK-NM</b>	<a href="#">LM CT109</a>
<b>Neg. Cash Volume:</b>	80	<b>Dressed Formula Vol:</b> 13,010
Live Steer Avg:	N/A	Steer/Heifer Avg: \$199.63
Live Heifer Avg:	N/A	<b>Dressed Neg. Grid Vol:</b> 87
Dressed Steer Avg:	N/A	Steer/Heifer Avg: \$169.39
Dressed Heifer Avg:	N/A	<b>TOTAL VOLUME:</b> 13,177
<a href="#">LM CT106</a>	<b>TOTAL WK TO DATE VOLUME:</b>	<b>62,809</b>
<b>Committed:</b>	27,431	<b>Delivered:</b> 19,937

<a href="#">LM CT121</a>	<b>KANSAS</b>	<a href="#">LM CT109</a>
<b>Neg. Cash Volume:</b>	1,031	<b>Dressed Formula Vol:</b> 13,219
Live Steer Avg:	\$124.00	Steer/Heifer Avg: \$201.28
Live Heifer Avg:	\$123.21	<b>Dressed Neg. Grid Vol:</b> 0
Dressed Steer Avg:	N/A	Steer/Heifer Avg: N/A
Dressed Heifer Avg:	N/A	<b>TOTAL VOLUME:</b> 14,250
<a href="#">LM CT106</a>	<b>TOTAL WK TO DATE VOLUME:</b>	<b>71,556</b>
<b>Committed:</b>	11,656	<b>Delivered:</b> 16,396

<a href="#">LM CT124</a>	<b>NEBRASKA</b>	<a href="#">LM CT109</a>
<b>Neg. Cash Volume:</b>	130	<b>Dressed Formula Vol:</b> 14,225
Live Steer Avg:	N/A	Steer/Heifer Avg: \$211.64
Live Heifer Avg:	N/A	<b>Dressed Neg. Grid Vol:</b> 114
Dressed Steer Avg:	\$204.00	Steer/Heifer Avg: \$208.00
Dressed Heifer Avg:	N/A	<b>TOTAL VOLUME:</b> 14,469
<a href="#">LM CT106</a>	<b>TOTAL WK TO DATE VOLUME:</b>	<b>37,970</b>
<b>Committed:</b>	18,287	<b>Delivered:</b> 18,592

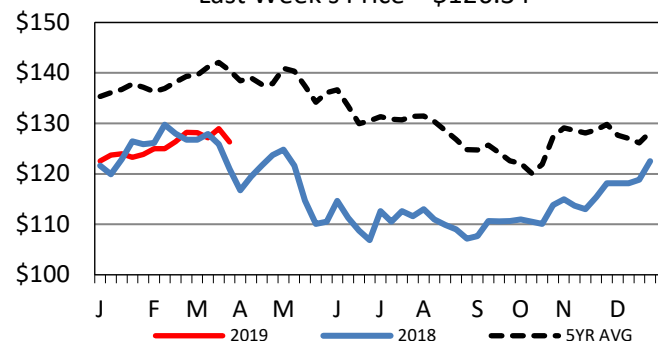
<a href="#">LM CT134</a>	<b>COLORADO</b>	<a href="#">LM CT109</a>
<b>Neg. Cash Volume:</b>	180	<b>Dressed Formula Vol:</b> 4,940
Live Steer Avg:	N/A	Steer/Heifer Avg: \$211.63
Live Heifer Avg:	\$124.00	<b>Dressed Neg. Grid Vol:</b> 0
Dressed Steer Avg:	N/A	Steer/Heifer Avg: N/A
Dressed Heifer Avg:	N/A	<b>TOTAL VOLUME:</b> 5,120
<a href="#">LM CT106</a>	<b>TOTAL WK TO DATE VOLUME:</b>	<b>16,460</b>
<b>Committed:</b>	533	<b>Delivered:</b> 9,986

<a href="#">LM CT137</a>	<b>IA-MN</b>	<a href="#">LM CT109</a>
<b>Neg. Cash Volume:</b>	5,369	<b>Dressed Formula Vol:</b> 2,447
Live Steer Avg:	\$130.00	Steer/Heifer Avg: \$206.14
Live Heifer Avg:	\$128.02	<b>Dressed Neg. Grid Vol:</b> 1,213
Dressed Steer Avg:	\$203.94	Steer/Heifer Avg: \$206.60
Dressed Heifer Avg:	\$204.82	<b>TOTAL VOLUME:</b> 9,029
<a href="#">LM CT106</a>	<b>TOTAL WK TO DATE VOLUME:</b>	<b>28,315</b>
<b>Committed:</b>	9,213	<b>Delivered:</b> 9,006

Negotiated cash trade light on moderate demand in the Western Cornbelt. In the Western Cornbelt, early live purchases steady to 2.00 lower with the bulk at 127.00, few up to 128.00. Early dressed purchases 1.00-2.00 lower, bulk at 204.00 with a few up to 206.00. Trade mostly inactive on light to moderate demand in all other feeding regions. The latest established market in the Southern Plains was Wednesday, with live at 124.00. The latest established market in Nebraska was last week with live purchases at 126.00, few up to 127.00. Dressed at 206.00. In Colorado last week, live purchases traded at 126.00.

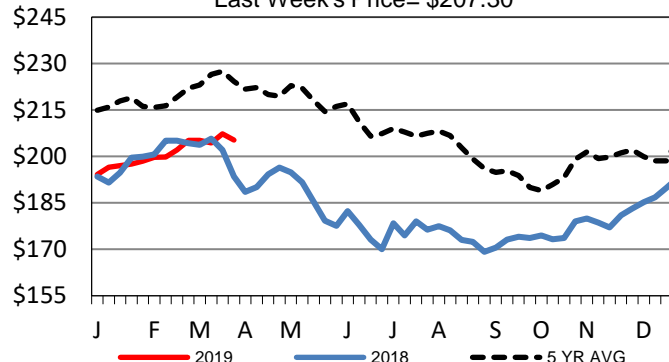
## 5-Area Live Steer Weighted Average

Last Week's Price = \$126.34



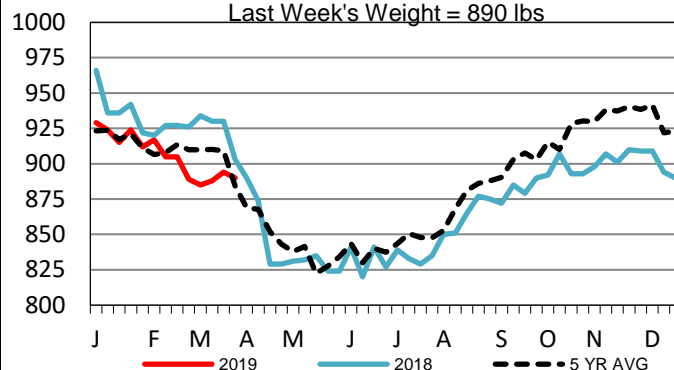
## Iowa-Minnesota Wkly Dressed Steer Wtd Avg

Last Week's Price = \$207.30



## Iowa-Minnesota Formula Carcass Weights

Last Week's Weight = 890 lbs



## USDA Livestock, Poultry and Grain Market News

St. Joseph, Missouri

Phone: 816-676-7000

[stjoe.lpgmn@ams.usda.gov](mailto:stjoe.lpgmn@ams.usda.gov)